



Vermont Fish & Wildlife Department

Batten Kill

Streambank Management Area

General Description

The Batten Kill is one of New England’s most iconic trout fishing rivers and is considered by many to be the home of fly fishing. It flows from East Dorset, through Manchester, Sunderland, and Arlington before entering New York and continuing to the Hudson River. Wild Brook and Brown Trout can be found throughout the Vermont portion of the river, with fish generally larger further downstream. The fish in this all-wild fishery are notoriously wily, making it the perfect place for any angler to test their skill. South of the Route 11/30 bridge, trout are catch-and-release only, and they are seasonally catch-and-release further upstream. This, in addition to habitat restoration, has allowed the wild fishery to bounce back from a low point in the 1990s, and it is now home to many trophy fish, with the population continuing to grow.



Fishing Regulations

<https://www.cregulations.com/vermont/>



About Streambank Management Areas

Streambank Management Areas were purchased by the Vermont Fish & Wildlife Department to ensure access to the state’s rivers for angling and other recreation, and to improve habitat for aquatic species.

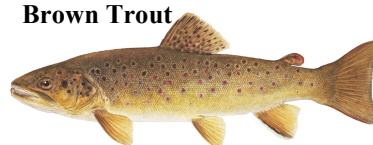
The following maps are for illustrative purposes only. No warranty as to the accuracy or the usefulness of the data is expressed or implied. The sign to the right indicates SMA lands.



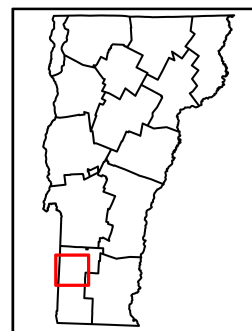
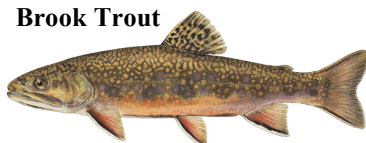
Potential Target Species

Brook Trout
Brown Trout

Brown Trout



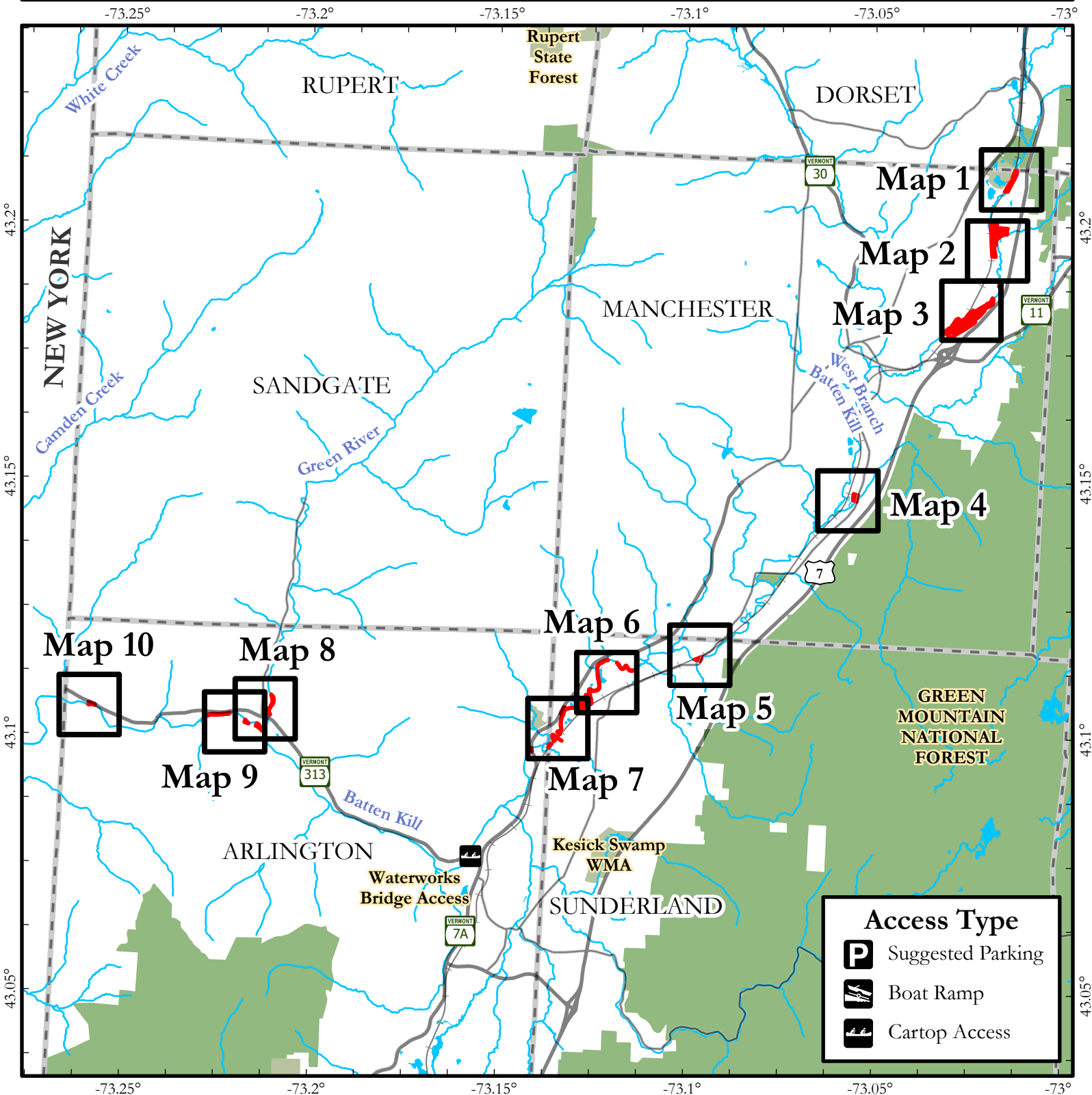
Brook Trout



For more information regarding Batten Kill SMA, call the Springfield Fisheries office at (802) 289-0603.

Stocking information for this river and other Vermont waterbodies: <https://anrweb.vt.gov/FWD/FW/FishStockingSearch.aspx>

Master Angler program info and entries from this river: <https://vtfishandwildlife.com/fish/fishing-events-and-programs/master-angler-program>



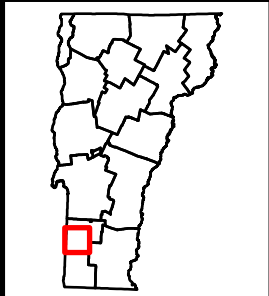
Access Type

- Suggested Parking
- Boat Ramp
- Cartop Access

Batten Kill - Overview

0 0.5 1 2 3 Miles

This map is for illustrative purposes only. The accuracy of the data layers shown on this map are limited by the accuracy of the source materials. No warranty as to the accuracy or the usefulness of the data is expressed or implied.

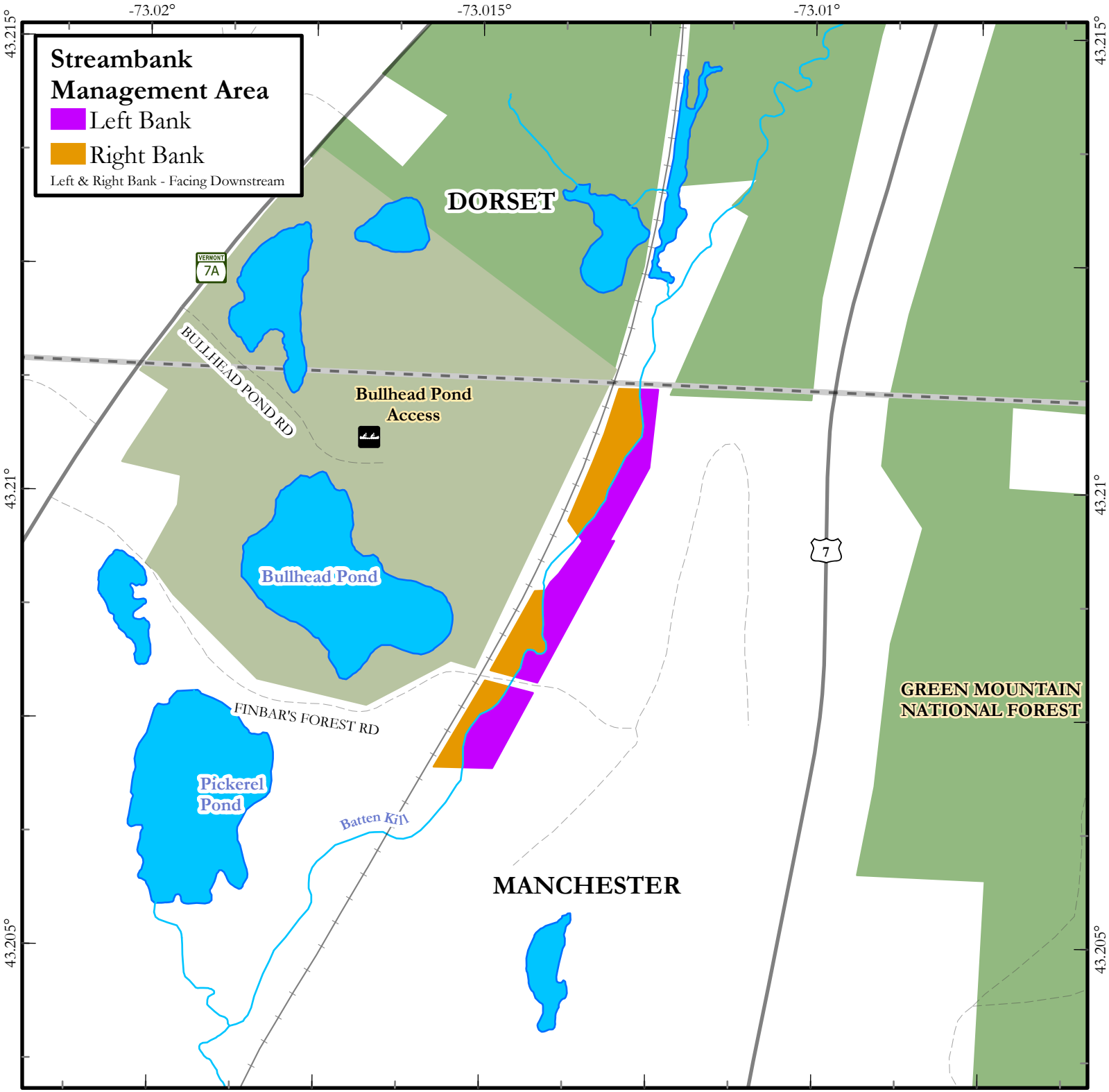


Conserved Lands

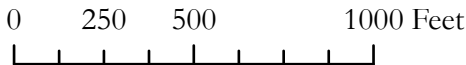
- Federal
- State
- Town
- Water
- Streambank Management Area

Travel Routes

- Town Boundary
- Interstate
- Highway
- Railroad



Batten Kill - Map 1

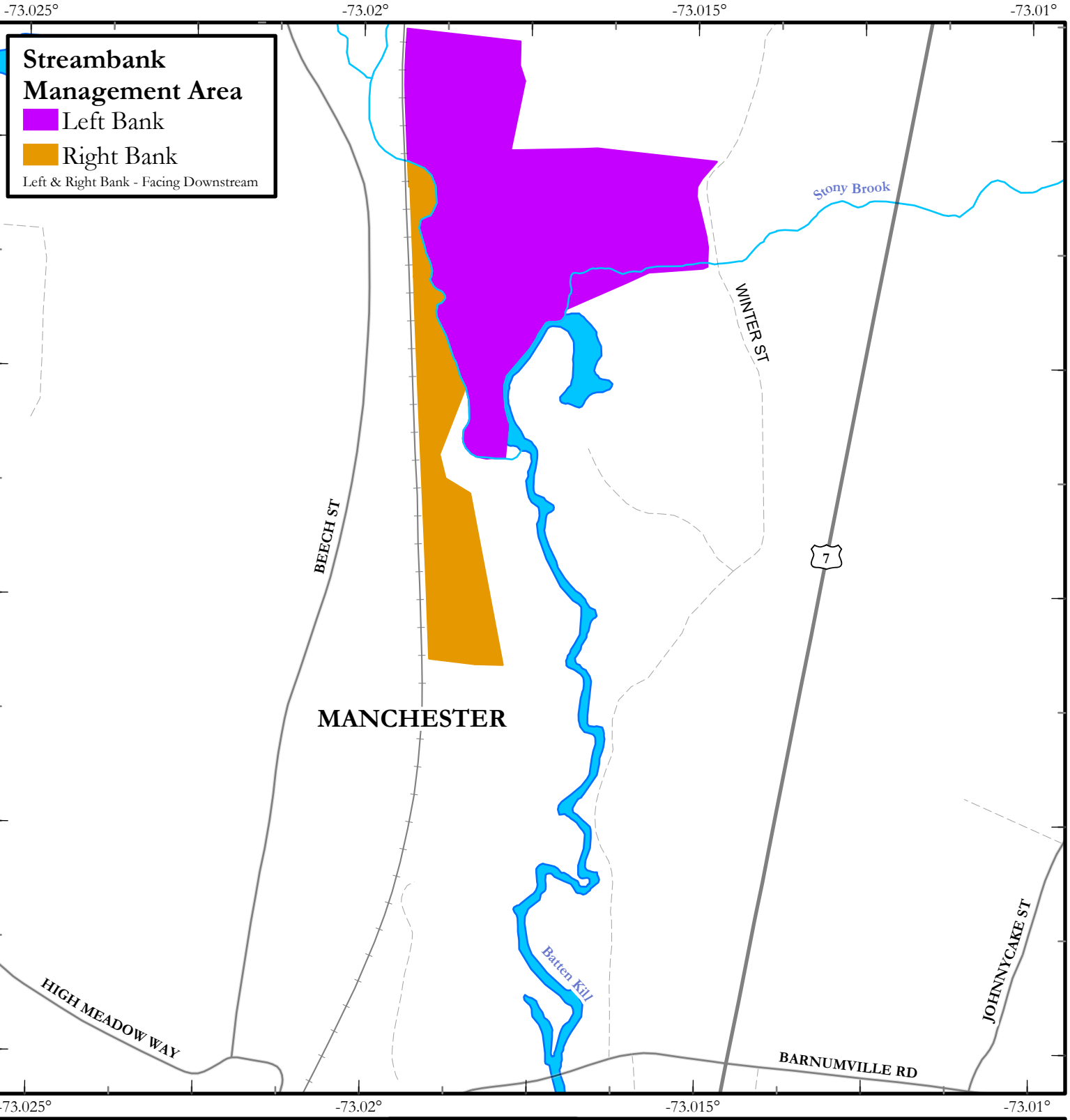


Conserved Lands

- Federal
- State
- Town
- Water
- Town Boundary

- Foot Path
- Railroad
- P Suggested Parking
- P Cartop Access
- P Boat Ramp

This map is for illustrative purposes only. The accuracy of the data layers shown on this map are limited by the accuracy of the source materials. No warranty as to the accuracy or the usefulness of the data is expressed or implied.



Batten Kill - Map 2

0 250 500 1000 Feet

This map is for illustrative purposes only. The accuracy of the data layers shown on this map are limited by the accuracy of the source materials. No warranty as to the accuracy or the usefulness of the data is expressed or implied.



Conserved Lands

- Federal
- State
- Town
- Water
- Town Boundary
- Foot Path
- Railroad
- Suggested Parking
- Cartop Access
- Boat Ramp

-73.03°

-73.025°

-73.02°

Streambank Management Area

Left Bank

Right Bank

Left & Right Bank - Facing Downstream

43.185°

43.185°

43.18°

43.18°

MANCHESTER

Dufresne Pond
P Access

Dufresne Dam
On Dufresne Pond
Access P

TOWN SHED RD

BARNUMVILLE RD

BEECH ST

Batten Kill

7

-73.03°

-73.025°

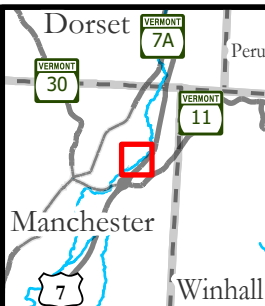
-73.02°

Batten Kill - Map 3

0 250 500 1000 Feet



This map is for illustrative purposes only. The accuracy of the data layers shown on this map are limited by the accuracy of the source materials. No warranty as to the accuracy or the usefulness of the data is expressed or implied.



Conserved Lands

Federal

State

Town

Water

Town Boundary

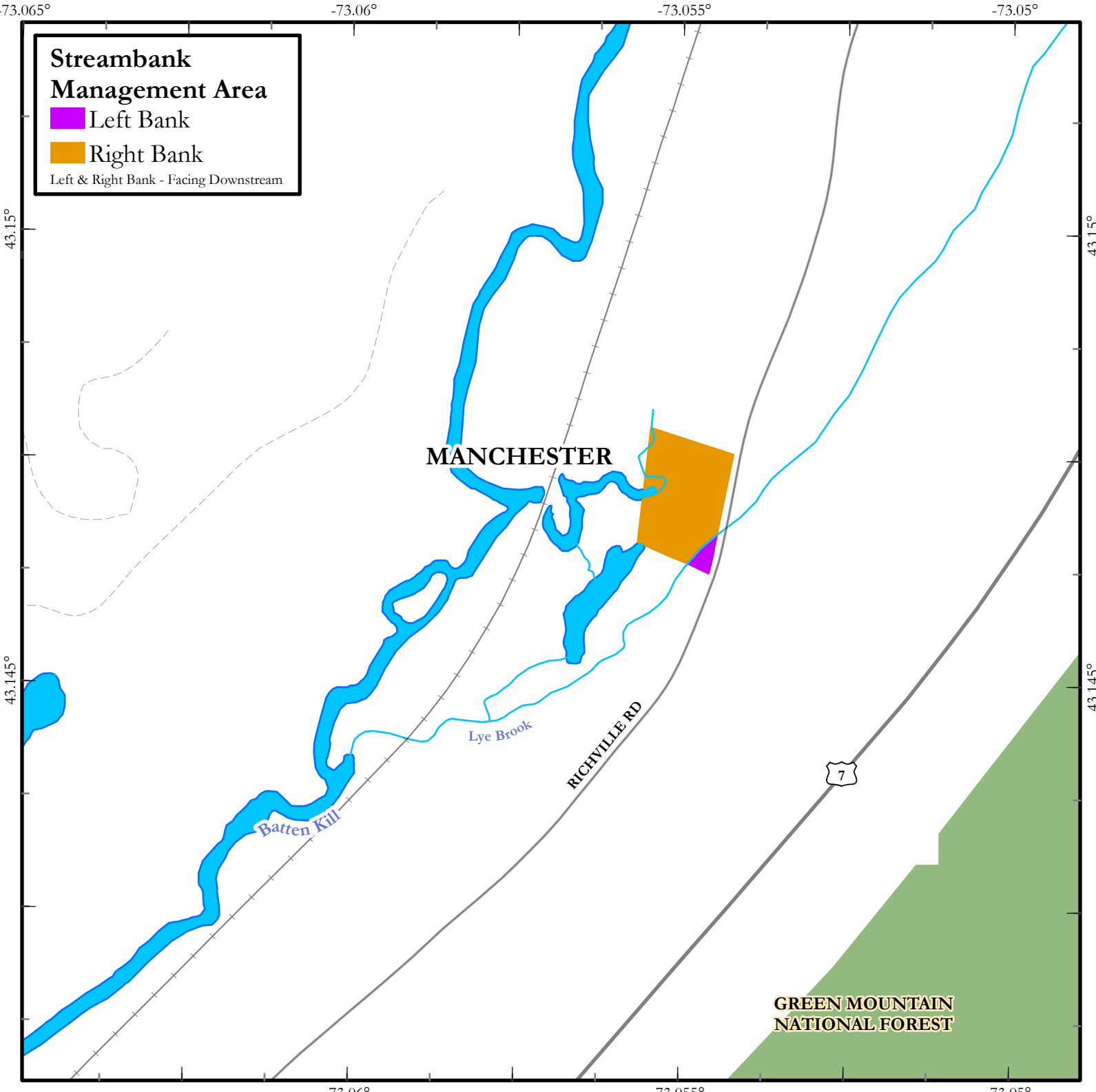
..... Foot Path

—+— Railroad

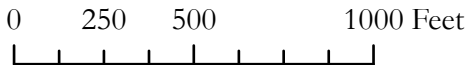
P Suggested Parking

Ⓜ Cartop Access

Ⓡ Boat Ramp



Batten Kill - Map 4

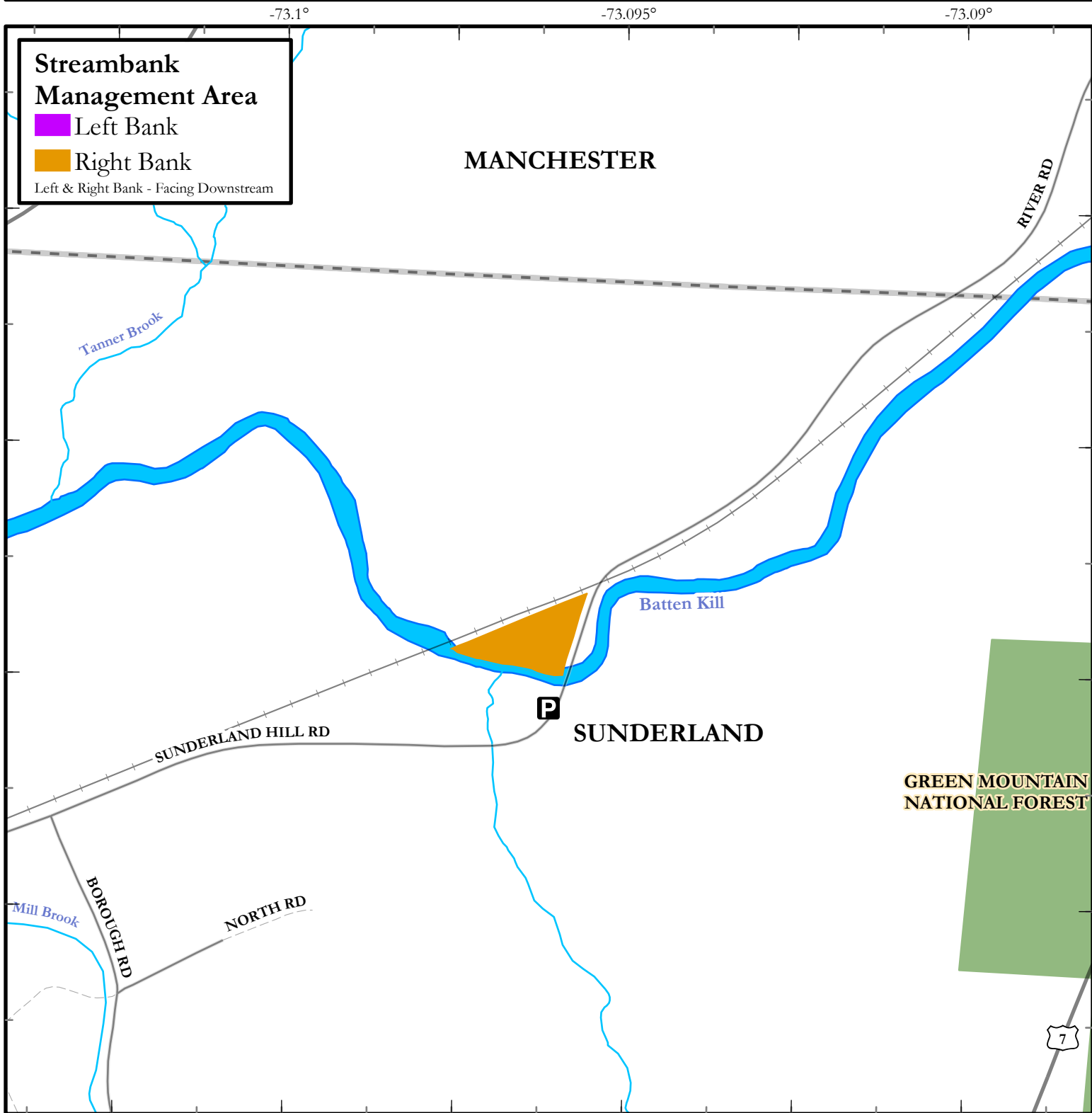


This map is for illustrative purposes only. The accuracy of the data layers shown on this map are limited by the accuracy of the source materials. No warranty as to the accuracy or the usefulness of the data is expressed or implied.



Conserved Lands

- Federal
- State
- Town
- Water
- Town Boundary
- Foot Path
- Railroad
- Suggested Parking
- Cartop Access
- Boat Ramp



Batten Kill - Map 5

0 250 500 1000 Feet

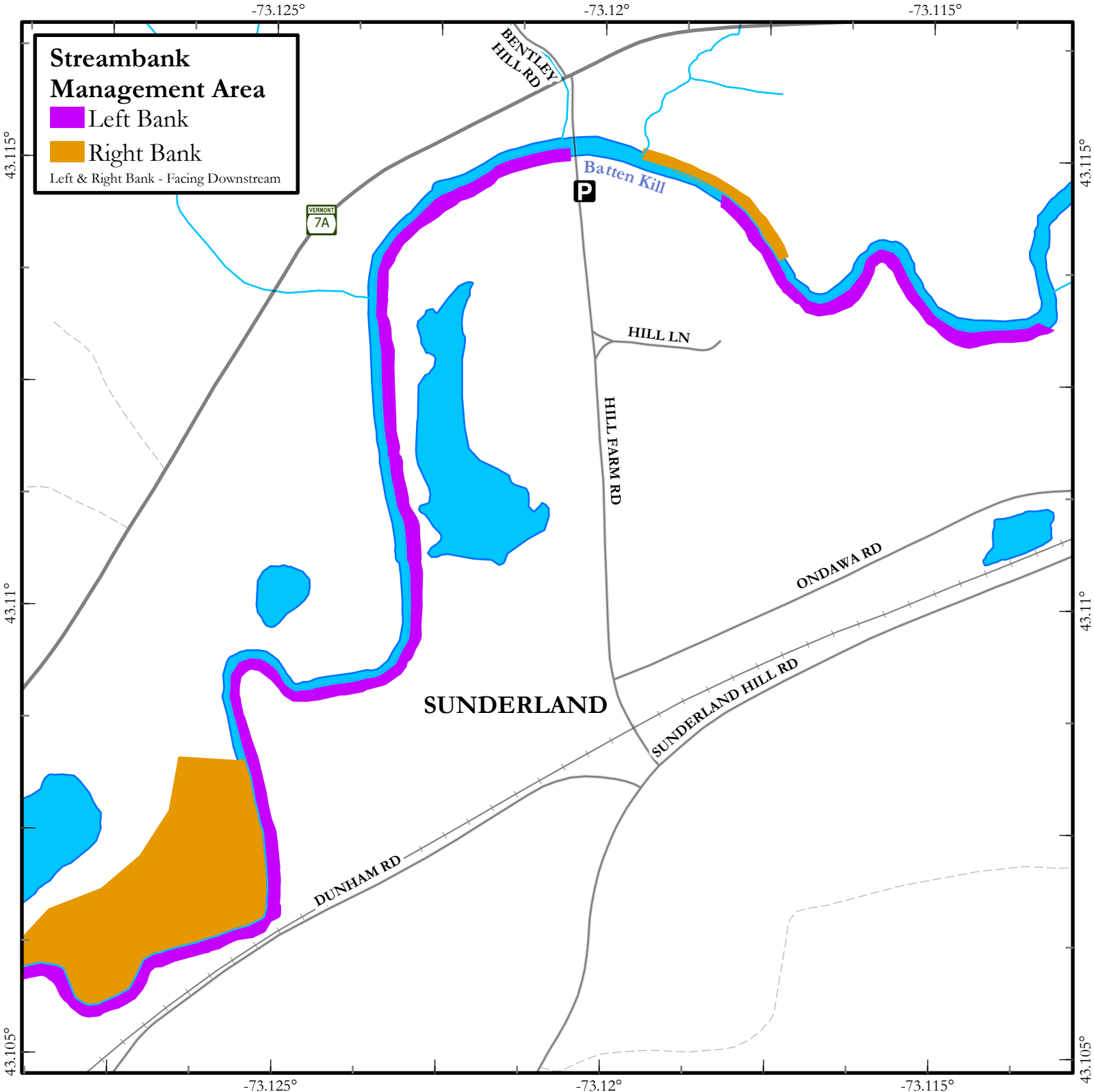


This map is for illustrative purposes only. The accuracy of the data layers shown on this map are limited by the accuracy of the source materials. No warranty as to the accuracy or the usefulness of the data is expressed or implied.



Conserved Lands

- Federal
- State
- Town
- Water
- Town Boundary
- Foot Path
- Railroad
- Suggested Parking
- Cartop Access
- Boat Ramp

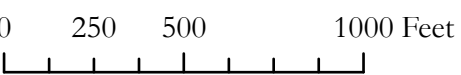


Streambank Management Area

- Left Bank
- Right Bank

Left & Right Bank - Facing Downstream

Batten Kill - Map 6



This map is for illustrative purposes only. The accuracy of the data layers shown on this map are limited by the accuracy of the source materials. No warranty as to the accuracy or the usefulness of the data is expressed or implied.



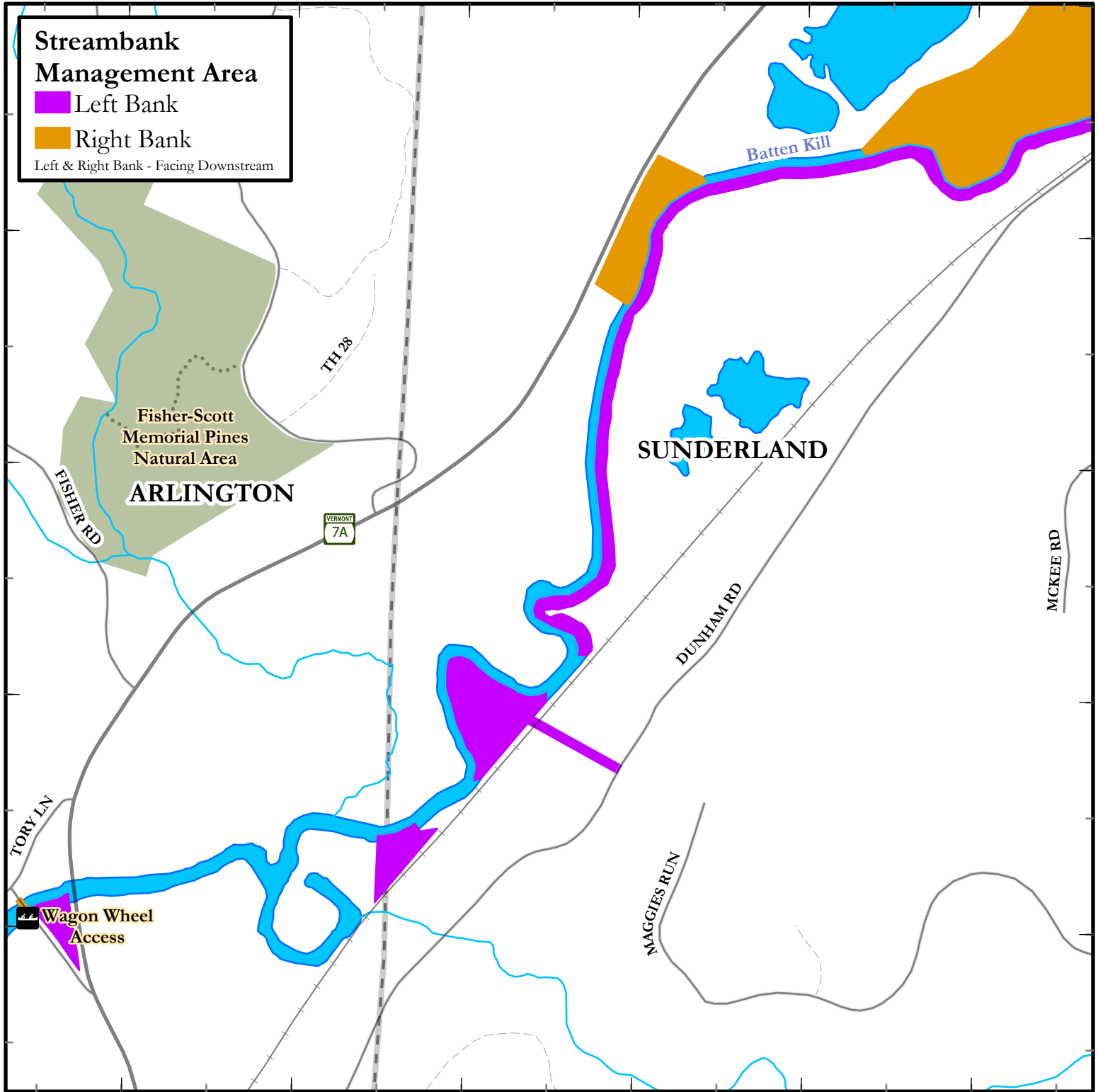
Conserved Lands

- Federal
- State
- Town
- Water
- Town Boundary
- Foot Path
- Railroad
- P Suggested Parking
- P Cartop Access
- B Boat Ramp

-73.14°

-73.135°

-73.13°



43.105°

43.105°

43.1°

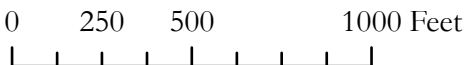
43.1°

-73.14°

-73.135°

-73.13°

Batten Kill - Map 7



This map is for illustrative purposes only. The accuracy of the data layers shown on this map are limited by the accuracy of the source materials. No warranty as to the accuracy or the usefulness of the data is expressed or implied.



Conserved Lands

- Federal
- State
- Town
- Water
- Town Boundary
- Foot Path
- Railroad
- Suggested Parking
- Cartop Access
- Boat Ramp

-73.215°

-73.21°

-73.205°

43.11°

43.11°

43.105°

43.105°

43.1°

43.1°

-73.215°

-73.21°

-73.205°

Streambank Management Area

Left Bank

Right Bank

Left & Right Bank - Facing Downstream

ARLINGTON

SANDGATE RD

SYCAMORE LN

BERWAL RD

VERMONT
313

Batten Kill

RIVER RD

Green River

P

Batten Kill - Map 8

N



0 250 500 1000 Feet

This map is for illustrative purposes only. The accuracy of the data layers shown on this map are limited by the accuracy of the source materials. No warranty as to the accuracy or the usefulness of the data is expressed or implied.

Sandgate

Arlington

VERMONT
7A

Conserved Lands

Federal

State

Town

Water

Town Boundary

Foot Path

Railroad

Suggested Parking

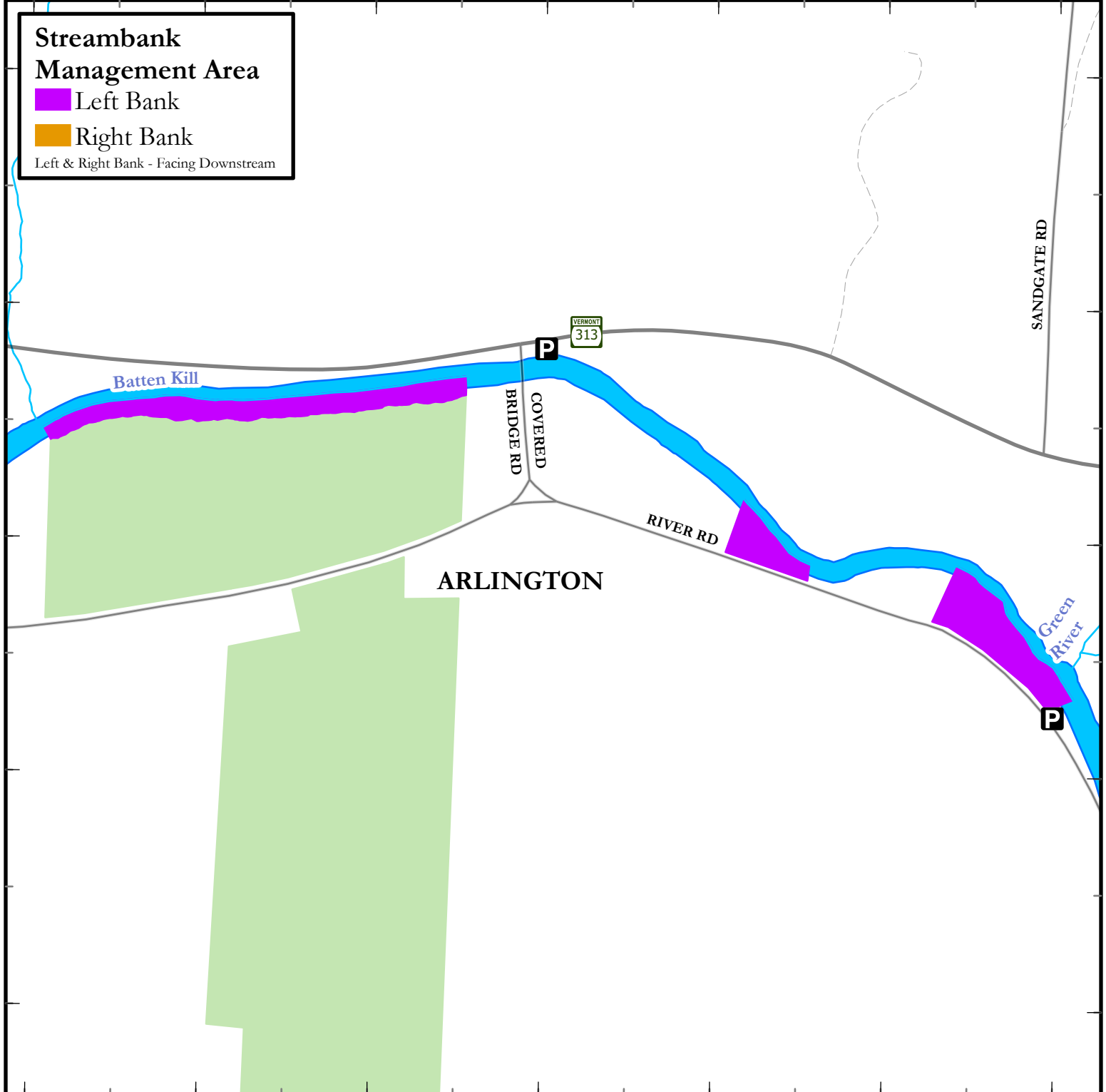
Cartop Access

Boat Ramp

-73.225°

-73.22°

-73.215°



Streambank Management Area

Left Bank

Right Bank

Left & Right Bank - Facing Downstream

43.105°

43.105°

43.1°

43.1°

-73.225°

-73.22°

-73.215°

Batten Kill - Map 9

0 250 500 1000 Feet



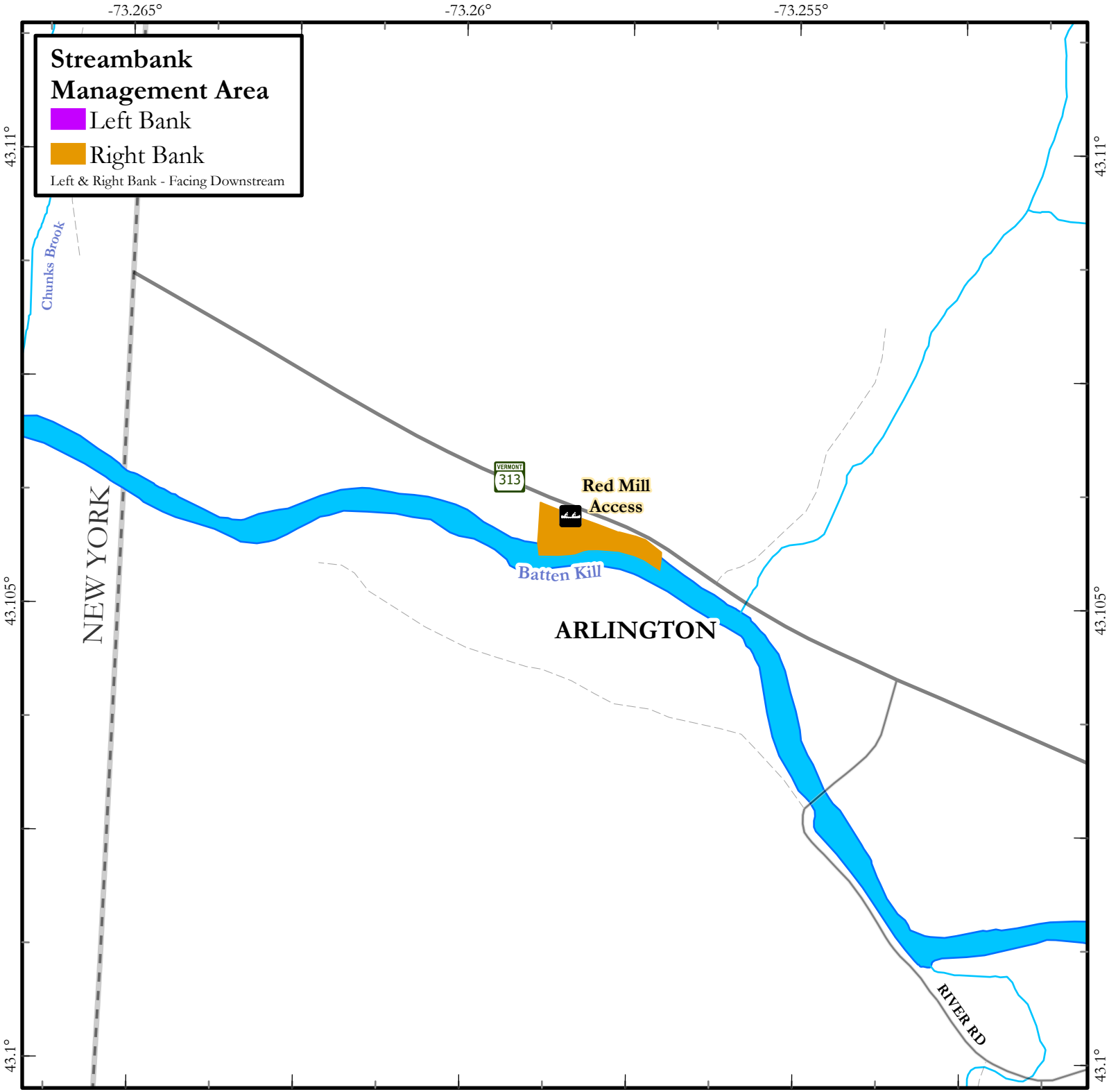
This map is for illustrative purposes only. The accuracy of the data layers shown on this map are limited by the accuracy of the source materials. No warranty as to the accuracy or the usefulness of the data is expressed or implied.



Conserved Lands

- Federal
- State
- Town
- Water
- Town Boundary

- Foot Path
- Railroad
- Suggested Parking
- Cartop Access
- Boat Ramp



Batten Kill - Map 10

0 250 500 1000 Feet



This map is for illustrative purposes only. The accuracy of the data layers shown on this map are limited by the accuracy of the source materials. No warranty as to the accuracy or the usefulness of the data is expressed or implied.



Conserved Lands

- Federal
- State
- Town
- Water
- Town Boundary
- Foot Path
- Railroad
- Suggested Parking
- Cartop Access
- Boat Ramp