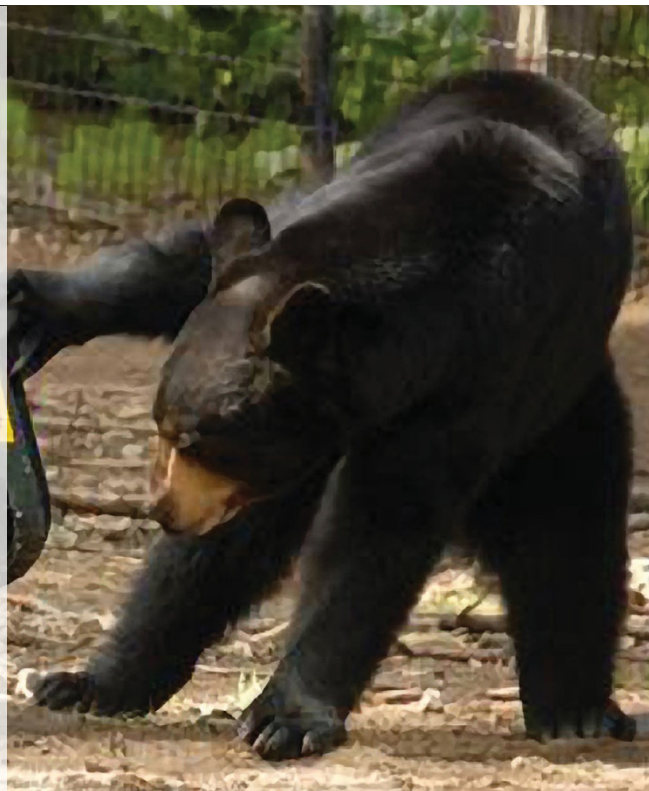


# Bear Proof Your Garbage

- Use locking or latching metal or hard plastic containers
- Store containers in locked sturdy shed or basement
- Double bag garbage
- Mask odor with ammonia
- Freeze table scraps
- Take garbage to transfer stations often
- Take your garbage outside for curbside pickup the morning of pickup and not the night before



## Dumpster needs to be “bear proof”



- Must have metal tops and doors NOT plastic
- Must have locking mechanisms, like bars, locks, or latches, for all openings
- Must be used properly! Put all garbage inside the dumpster and secure locking mechanisms after every use

Dumpsters should have signage warning users about bears and listing how to properly use dumpsters.