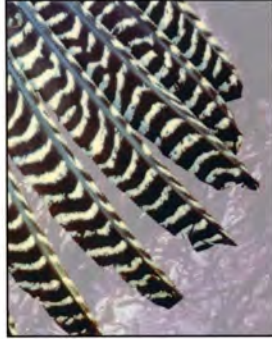


AGING SPRING TURKEYS

STEP 1: AGE

ADULT or JUVENILE - examine the last 1 or 2 wing feathers.
Measure the spur. Measure the beard. Examine the tail fan.

WING - examine the last 1 or 2 wing feathers.



ADULTS have rounded feathers with white barring to tip.



JUVENILES have narrow pointed feathers with no white bars on the last 2 inches.

SPUR - spurs grow as the turkey gets older. Generally the longer the spur, the older the bird.



Place ruler against leg at base of spur and record length of spur to nearest $\frac{1}{8}$ of an inch.



ADULT spurs are generally longer than $\frac{1}{2}$ ".



JUVENILE spurs are generally shorter than $\frac{1}{2}$ ".

BEARD - beards grow as the turkey gets older.

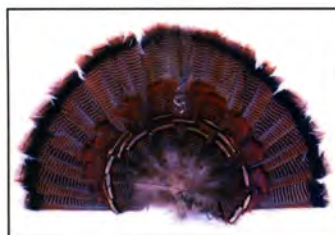


Measure the beard from the point of attachment to end of beard.



ADULT beards are generally longer than 6".

TAIL - fan the tail and look at the central tail feathers.



ADULT tail fan is symmetrical. Central tail feathers are the same length as the rest of the tail feathers.

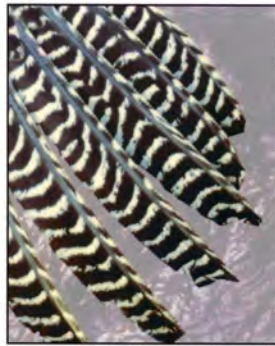


JUVENILE tail fan is not symmetrical. Central tail feathers are longer than the rest of the tail feathers.

AGING & SEXING FALL TURKEYS

STEP 1: AGE

ADULT or JUVENILE - examine the last 1 or 2 wing feathers.



ADULTS have rounded feathers with white barring on tip.



JUVENILES have narrow pointed feathers with no white bars on the last 2 inches.

STEP 2: SEX

MALE or FEMALE - examine breast feathers and legs (*adult only*).

A. FOR ADULTS:

MALES have black-tipped breast feathers and leg spurs.

FEMALES have buff-tipped breast feathers and no leg spurs.



B. FOR JUVENILES: Do not look at the legs, they are similar for young males and females. Instead, examine the breast feathers. You will have to brush your hand against the breast feathers to look for new feathers coming in underneath the outer feathers. At the surface, juvenile male and female breast feathers often look the same.

MALES have some black-tipped feathers growing in.

FEMALES have buff-tipped breast feathers and no black-tipped feathers growing in.

