



# Vermont Fish & Wildlife Department 2013 Wildlife Management Areas Annual Report



The Mission of the Vermont Fish & Wildlife Department is to **Protect and Conserve** our **Fish, Wildlife, Plants** and their **Habitats** for the **People of Vermont**.

The Vermont Fish & Wildlife Department manages 89 Wildlife Management Areas (WMAs) and numerous riverfront parcels totaling more than 133,000 acres. Management of these areas emphasizes the conservation of fish, wildlife and their habitats, as well as public access for hunting, fishing, trapping and other wildlife-based activities. A recent U.S. Fish and Wildlife Service survey highlights that Vermont ranks second only to Alaska for public participation in fish and wildlife recreation. This report summarizes activities conducted to manage these lands in 2013.

## Protect and Conserve...

The following activities were conducted to protect and conserve these valuable properties:

- **64** acres received invasive plant control measures
- **4** miles of boundary lines were surveyed
- **0.5** mile of fence was installed plus **3** gates were installed or repaired
- **20** miles of boundary lines were painted
- **240** illegally dumped tires were removed from department land
- **3** archaeology investigations were conducted

## our Fish, Wildlife, Plants...

- **47** inventories of wildlife, fish, plants, and natural communities were conducted on WMAs by Vermont Agency of Natural resources staff in 2013.

## and their Habitats...

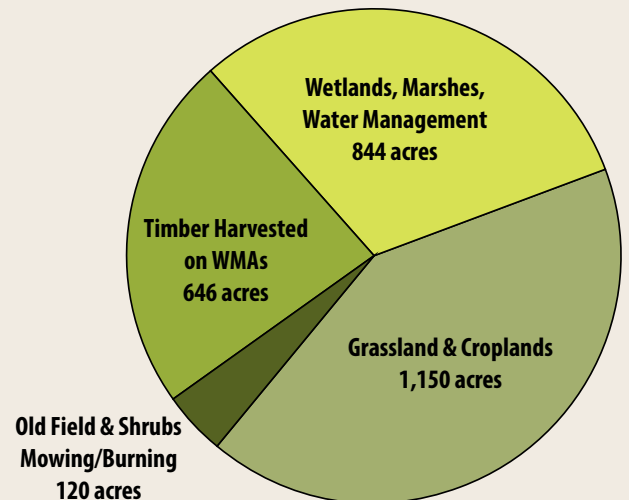
The following activities were conducted to enhance wildlife habitat on WMAs statewide:

- **32** dams were maintained to manage **844** wetland acres
- **4** flow devices were installed to retain beaver wetland habitat
- **645** nesting boxes for ducks were maintained
- **1,102** trees were planted and **3.7** acres of river bank habitat were restored
- **360** wild fruit and nut trees were maintained
- **7** acres of apple trees were released and **3** acres of high-quality young timber were improved by thinning



LINDA MORSE

## 2,760 Acres of Habitat Managed in 2013





## for the People of Vermont.

Maintaining facilities and infrastructure such as roads, bridges, and signs is essential to achieve the habitat management and public use goals of each area. The following activities were conducted to improve Vermonters' experience when visiting the state's WMAs:

### SIGNAGE

- 3 new kiosks were installed
- 40 information kiosks were maintained
- 6 entrance signs were installed

### FACILITIES

- 6 buildings were maintained
- 24 parking areas were maintained
- 2 new parking areas were installed

### PLANNING

- 3 management plans were completed
- 21 press releases and articles were published
- 8 public meetings were conducted

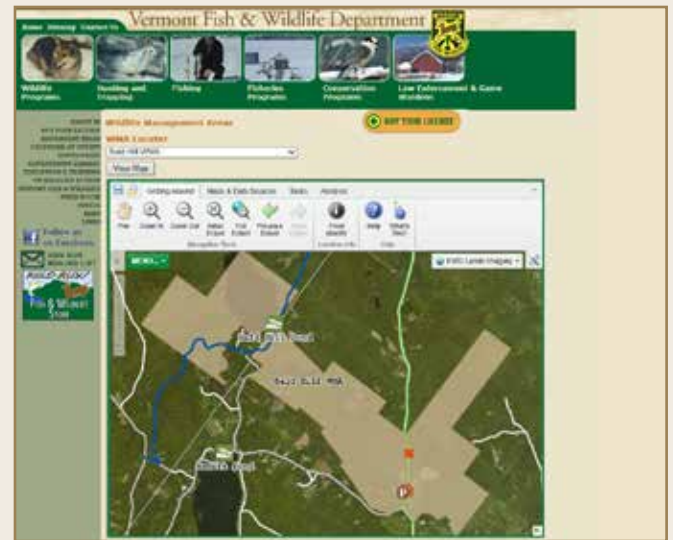
### ACCESS

- 1.2 trail miles were maintained
- 14 bridges/culverts were installed
- 30 miles of roads were maintained (about the distance from Montpelier to S. Burlington!)

Other program activities benefiting all Vermonters include:

### WEB-BASED MAP TOOL

- A new web-based map tool is now available, providing better, more up-to-date information on WMAs around Vermont. This tool is available on the department's website at: [www.anr.state.vt.us/fwd/WmaLocator.aspx](http://www.anr.state.vt.us/fwd/WmaLocator.aspx).



### LAND ACQUISITION

- The department added a total of 579 acres to four Wildlife Management Areas in 2013. A total of 12 parcels, ranging from about 1 to 3000 acres, are currently in various stages of department acquisition. The department anticipates purchasing most of these properties in 2014.

**Wildlife Habitat Timber Harvests on Department Lands FY09-13**

	FY09	FY10	FY11	FY12	FY13	5 YEAR TOTALS
Fee acres harvested	624	565	404	244	296	2,133
Board Feet (MBF)	992	782	739	380	574	3,467
Cords	3,477	1,939	3,215	1,722	2,488	12,841
Non-fee acres harvested	300	500	700	200	350	2,050
# Active Timber Harvests	11	8	14	9	10	N/A

### PROGRAM PARTNERS

Most of the programs described in this report are funded through the Federal Aid in Wildlife Restoration Program. Excise taxes paid by hunters on firearms, ammunition and archery equipment, coupled with state hunting license fees, have helped the department acquire land, and restore and manage wildlife.

The Ruffed Grouse Society, Vermont Ducks Unlimited, and Vermont Forests, Parks, and Recreation Department provided financial assistance for habitat management on WMAs in 2013.

