

Buck Lake Wildlife Management Area

General Description

Buck Lake Wildlife Management Area (WMA) is located in the central Vermont town of Woodbury. It is home to one of two Green Mountain Conservation Camps operated by the Vermont Fish & Wildlife Department. The WMA is 275 acres in size and is mostly forested with red and sugar maple, yellow birch and beech. There are some small old fields along the access road. Buck Lake (49 acres) and a portion of its outlet, Buck Lake Brook, lie within the WMA and provide fishing opportunity for the public. Access to the WMA is from Route 14 and the Buck Lake Road. It is owned by the State of Vermont and managed by the Vermont Fish & Wildlife Department. The WMA borders Bardill Land & Lumber Company lands to the north and east.

Buck Lake WMA is open to regulated hunting, fishing, and trapping. Fishing is restricted to walk-in and car-top carry-in boats or canoes. When using this WMA at any time of the year, avoid those areas along the access road that are developed with camp buildings as these are frequently used as Department training and meeting sites in non-snow months.

History

The land for the WMA was purchased from the Vermont Ecumenical and Bible Society in 1970 using funds from the Federal Aid in Sportfish Restoration Act (also known as Dingell-Johnson Sportfish Restoration Act), which are generated from an excise tax on the sale of sport fishing equipment. There are remnants of granite quarry operations south and west of Buck Lake.

Habitat Features

Buck Lake WMA sits on the divide between the Winooski River and Lamoille River watersheds. Buck Lake

drains into the Kingsbury Branch of the Winooski River and eventually into the Winooski mainstem. Woodbury Gulf and 2,460-foot Woodbury Mountain are located to the northwest. Most of the WMA is upland habitat, with wet areas located adjacent to Buck Lake, especially along its outlet, where open-water beaver ponds are located.

The WMA is comprised of northern hardwood forest, with sugar maple, yellow birch and beech dominating the overstory. There are several small areas of mixed softwood species containing red spruce, balsam fir and hemlock. The shrub layer consists of striped maple, hobblebush and others typically associated with northern hardwoods.

Common Fish and Wildlife

Mammals Game animals include white-tailed deer, black bear, moose, snowshoe hare, beaver, otter, mink, raccoon and coyote. Expect to find many smaller non-game species as well.

Birds Expect to find ruffed grouse, woodcock, turkeys and deciduous forest songbirds such as scarlet tanager, redstart, black-throated blue warbler and northern waterthrush. Common loons nest on Buck Lake.

Reptiles and Amphibians Salamanders such as Jefferson's and associated hybrids, spotted, spring and eastern newts may be found on the WMA. American toads, American bullfrogs, green, pickerel, mink and wood frogs are also present. Wood turtles, ring-necked snakes, red-bellied snakes and gartersnakes may be found as well.

Fish Buck Lake contains smallmouth bass, yellow perch, brown bullhead and brook trout.



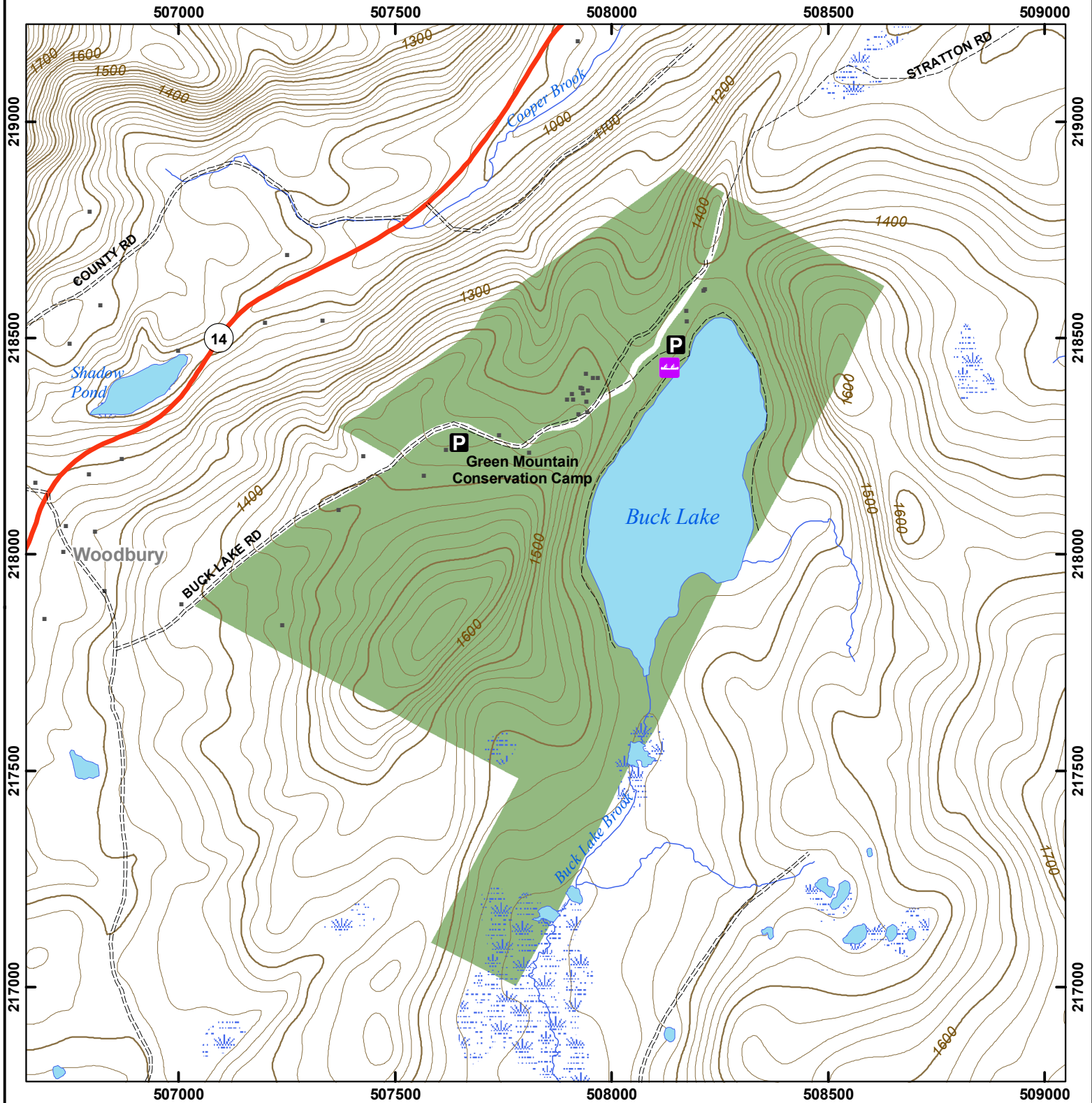
Moose watching has become a popular pastime in Vermont. Please keep a respectful distance. Cedric Alexander, VFWD photo.

Buck Lake WMA is open to regulated hunting, trapping, fishing, hiking and wildlife viewing.

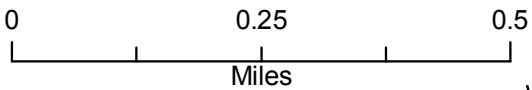


Vermont Fish & Wildlife Department

Buck Lake Wildlife Management Area



Buck Lake WMA: 275 acres



- Wildlife Management Area
- Other Public Land
- Private w/Public Access
- Wildlife Viewing Areas
- Car-top Access
- Parking
- Boat Ramp
- Gate
- Designated Camp Site During Big Game Seasons Only

This map is for illustrative purposes only. The accuracy of the data layers shown on this map are limited by the accuracy of the source materials. No warranty as to the accuracy or the usefulness of the data is expressed or implied.