

East Hill Wildlife Management Area

General Description

East Hill Wildlife Management Area (WMA) is located in the north central Vermont town of Wolcott. The WMA is approximately 962 acres in size, however only 452 of those acres are owned by the State of Vermont in fee simple (total ownership). The State of Vermont owns hunting rights only for the remaining 706 acres. The Vermont Fish & Wildlife Department manages 256 acres to the southeast of Wolcott Pond and the Vermont Department of Environmental Conservation (formerly Water Resources) manages approximately 196 acres south and east of Wolcott Pond. Wolcott Pond Access Area, managed by the Vermont Fish & Wildlife Department, is associated with the WMA and provides access to Wolcott Pond for fishing opportunities. Access to the WMA is from Route 15 and East Hill Road east of the Village of Wolcott. Developed parking lots exist on (Oral) Marsh Road before the intersection of Lafont/Simmons Road, as well as at the Wolcott Pond boating access area.



American woodcock can be found on East Hill.
VFWD photo.

History

The first purchase of land, 1.07 acres, was bought by the Vermont Fish & Wildlife Department from the Davis family in 1959. This afforded access to Wolcott Pond. Funding came from the Federal Aid in Sportfish Restoration Act (also known as Dingell-Johnson Sportfish Restoration Act). These funds are generated from an excise tax on the sale of sport fishing equipment.

In March of 1963, 206 acres were purchased. In July of the same year, the State acquired 24 more acres in fee simple and 706 acres of hunting rights. In 1971, the State obtained an additional 25 acres. All purchases were made with Vermont Fish & Wildlife funds generated from the sale of Vermont hunting and fishing licenses.

Habitat Features

East Hill WMA lies within the Lamoille River watershed. Currier Brook bisects the southern portion of the WMA from north to south and Wolcott Pond Brook bisects the WMA from east to west.

Much of the WMA is upland environment. The terrain is varied with rolling knolls and working farmland. There are wetland areas associated with Wolcott Pond, its one main inlet that comes into the pond from the southeast, and its outlet known as Wolcott Pond Brook. Beaver ponds are found along Wolcott Pond's inlet stream.

The WMA is mostly forested with one small field located at the developed parking lot on Marsh Road and a second small field located mid-way along the eastern boundary line. Both of these fields contain apple trees. The Department periodically maintains both the fields and apple trees by brush hogging and apple tree release work. Much of the WMA consists of balsam fir and red spruce with some scattered stands of hardwoods. The coniferous portions of the WMA serve as deer wintering areas.

Common Fish and Wildlife

Mammals Game animals include white-tailed deer, black bear, moose, snowshoe hare, beaver, otter, mink, raccoon and coyote. Expect to find many smaller non-game species as well.

Birds Expect to find ruffed grouse, woodcock and deciduous forest/coniferous forest-associated songbirds. Common loons are known to nest on Wolcott Pond. Many species of waterfowl can be found in the wetland and stream areas, as well as Wolcott Pond. Wood duck nesting boxes, maintained by the Department, are frequently utilized by wood ducks and hooded mergansers in the beaver-created wetlands that drain into Wolcott Pond.

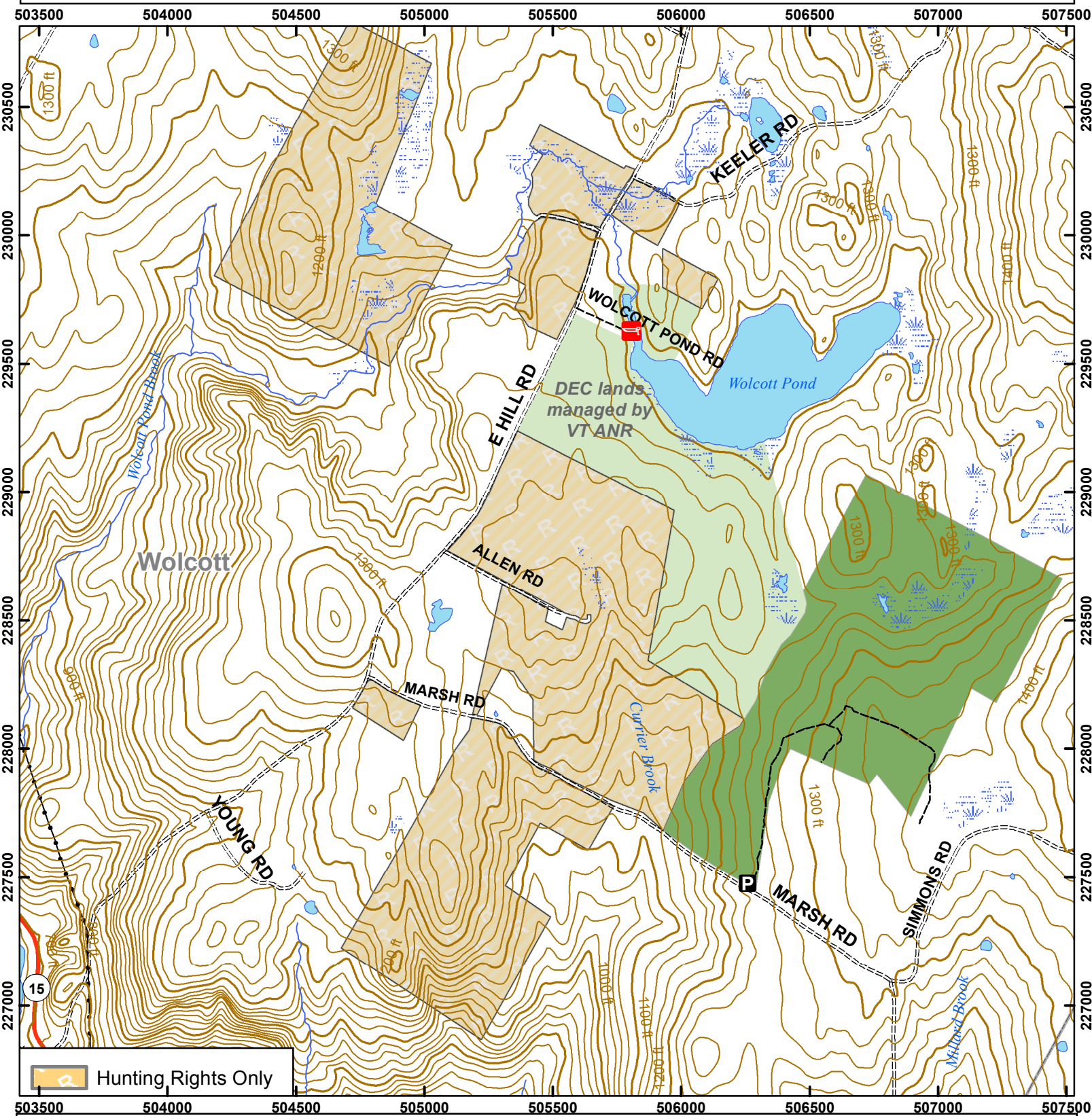
Reptiles and Amphibians Amphibians such as eastern newts and pickerel and mink frogs may be found on the WMA. Red-bellied and garter snakes are present and there is an historical account of Dekay's brownsnake occurring in Wolcott.

Fish Wolcott Pond provides fishing for warmwater species and contains smallmouth bass, yellow perch and brown bullhead.

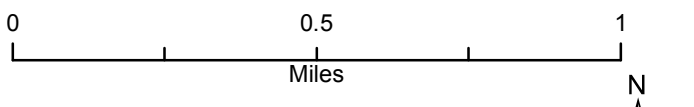


Vermont Fish & Wildlife Department

East Hill Wildlife Management Area



East Hill WMA: 962 acres



- Wildlife Management Area
- Other Public Land
- Private w/Public Access
- Boat Ramp
- Gate
- Wildlife Viewing Areas
- Car-top Access
- Parking
- Designated Camp Site During Big Game Seasons Only

This map is for illustrative purposes only. The accuracy of the data layers shown on this map are limited by the accuracy of the source materials. No warranty as to the accuracy or the usefulness of the data is expressed or implied.