

Washington Wildlife Management Area

General Description

Washington Wildlife Management Area (WMA) is located in the central Vermont town of Washington along the Corinth town line. The WMA is 260 acres in size, and is owned by the State of Vermont and managed by the Vermont Fish & Wildlife Department.

Access to the WMA can be gained from Washington Village by West Corinth and Scales Hill Roads, or from the southeast from Riders Corners. A Class 4 road bisects the WMA from northwest to southeast between Scales Road and Riders Corners. An undeveloped parking lot is located off the Class 4 road at an unused log landing in the northwest corner of the WMA.

History

Riders Corners, located off the southeast corner of the WMA, was named after the Rider family who used to farm in the area.

The WMA was purchased by the State of Vermont in 1961 from the L.W. Webster Company. Vermont Fish & Wildlife Department funds, generated from the sale of Vermont hunting and fishing licenses, were used for the purchase. Timber and mineral rights are not in possession of the State of Vermont, but were retained by the L.W. Webster Company.

Habitat Features

The WMA lies on the divide between the First Branch of the White River and the South Branch of the Waits River. It is completely forested with red and sugar maple, yellow birch and beech. Softwoods include red spruce, white pine and balsam fir. There is also a softwood plantation.

There is a small wetland in the southeast portion of the WMA. The aspect is southwesterly with elevations ranging from 2,200 feet to 1,700 feet.

Common Fish and Wildlife

Mammals Game animals include white-tailed deer, black bear, moose, coyote, snowshoe hare and fisher. Expect to find many smaller non-game species as well.

Birds Ruffed grouse and wild turkey can be found on the WMA, as well as a variety of other deciduous and coniferous forest-associated songbirds.

Reptiles and Amphibians Salamanders such as northern dusky, northern two-lined and red-backed might be found on the WMA. American toad, spring peeper and wood frogs are also known to occur. Other species may also be found.

Fish There are no fishable waters on the WMA.



Fishers had been extirpated in Vermont, but were reintroduced to help control the porcupine population. There is now a healthy population fisher in the State.

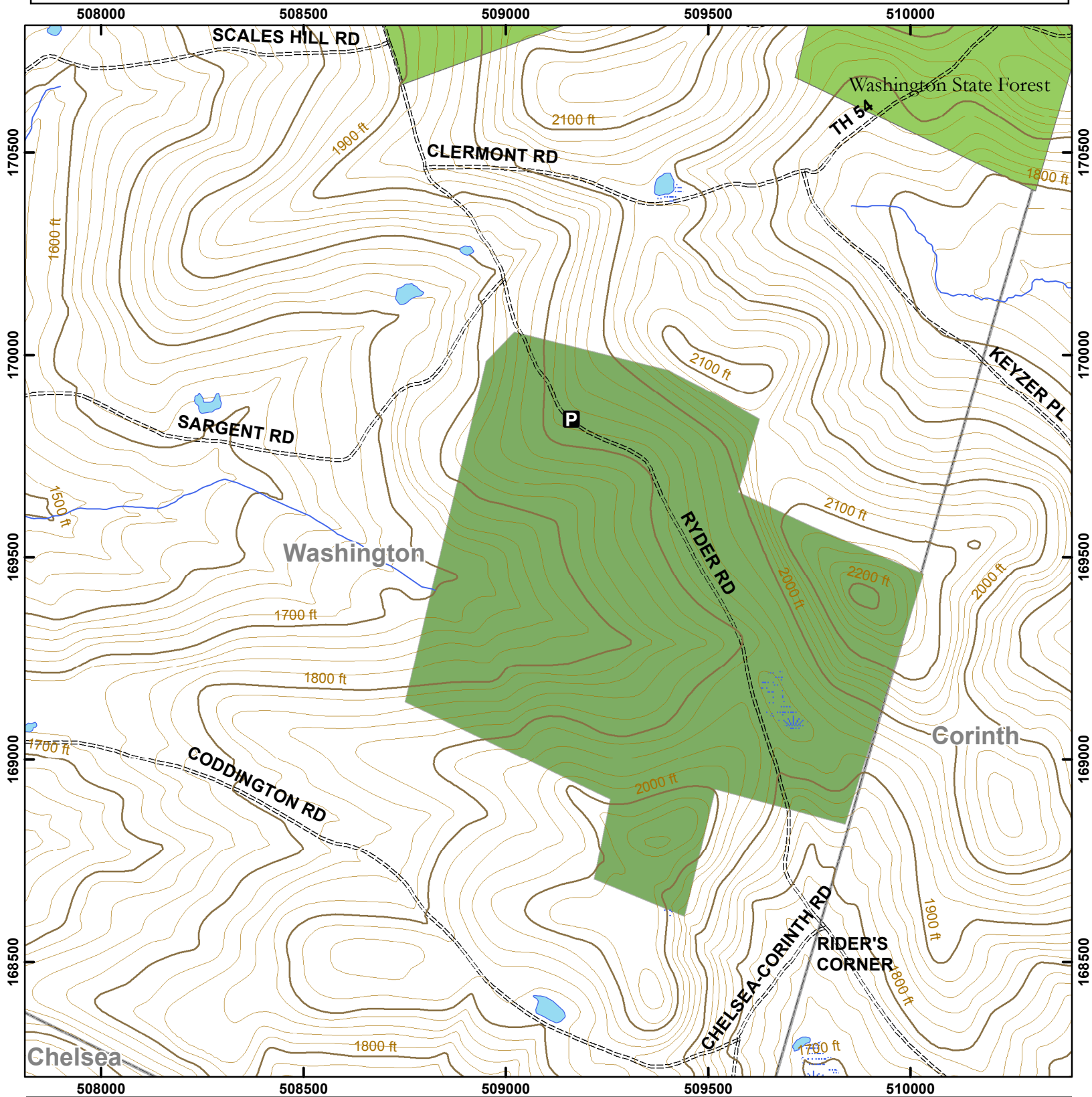
©Jupiter Images 2004.

Washington WMA is open to regulated hunting, trapping, hiking and wildlife viewing.

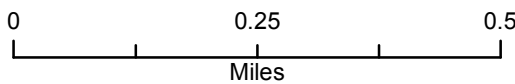


Vermont Fish & Wildlife Department

Washington Wildlife Management Area



Washington WMA: 260 acres



- Wildlife Management Area
- Other Public Land
- Private w/Public Access
- Wildlife Viewing Areas
- Car-top Access
- Parking
- Boat Ramp
- Gate
- Designated Camp Site During Big Game Seasons Only

This map is for illustrative purposes only. The accuracy of the data layers shown on this map are limited by the accuracy of the source materials. No warranty as to the accuracy or the usefulness of the data is expressed or implied.