

West Fairlee Wildlife Management Area

General Description

West Fairlee Wildlife Management Area (WMA) is located in the east central Vermont town of West Fairlee, just west of the village of West Fairlee. The WMA is 101 acres in size, is owned by the State of Vermont and managed by the Vermont Fish & Wildlife Department. Access to the WMA can be gained from West Fairlee Village via Back Street. Parking is difficult due to the small area of road frontage on Back Street. However, a developed parking lot may be constructed in the near future where the east corner of the WMA touches Back Street. An old woods road leads into the main body of the WMA.

History

Locally known Beanville was named after Alvah Bean, who came to the town in the mid 1800's. He had a store, gristmill, sawmill and a rake factory. He was also a State legislator, senator, justice of the peace, town treasurer and probate judge.

The WMA was purchased by the State of Vermont in 1969, using of Fish & Wildlife Department funds generated from the sale of Vermont hunting and fishing licenses.

Habitat Features

The WMA lies within the Ompompanoosuc River watershed. It is completely forested with sugar maple, yellow and white birch, aspen and beech. There are also a few areas of softwoods containing hemlock. There are no streams or wetlands present except some seeps. The aspect is northeasterly, with elevations ranging from 1,220 feet to 760 feet.

Common Fish and Wildlife

Mammals Game animals include white-tailed deer, moose and snowshoe hare. Expect to find many smaller non-game species as well.

Birds Ruffed grouse and wild turkey can be found on the WMA, as well as a variety of other deciduous and coniferous forest associated songbirds.

Reptiles and Amphibians Salamanders such as spotted and red-backed might be found on the WMA. American toad, wood frog, red-bellied and garter snakes may also be found.

Fish There are no fishable waters on the WMA.

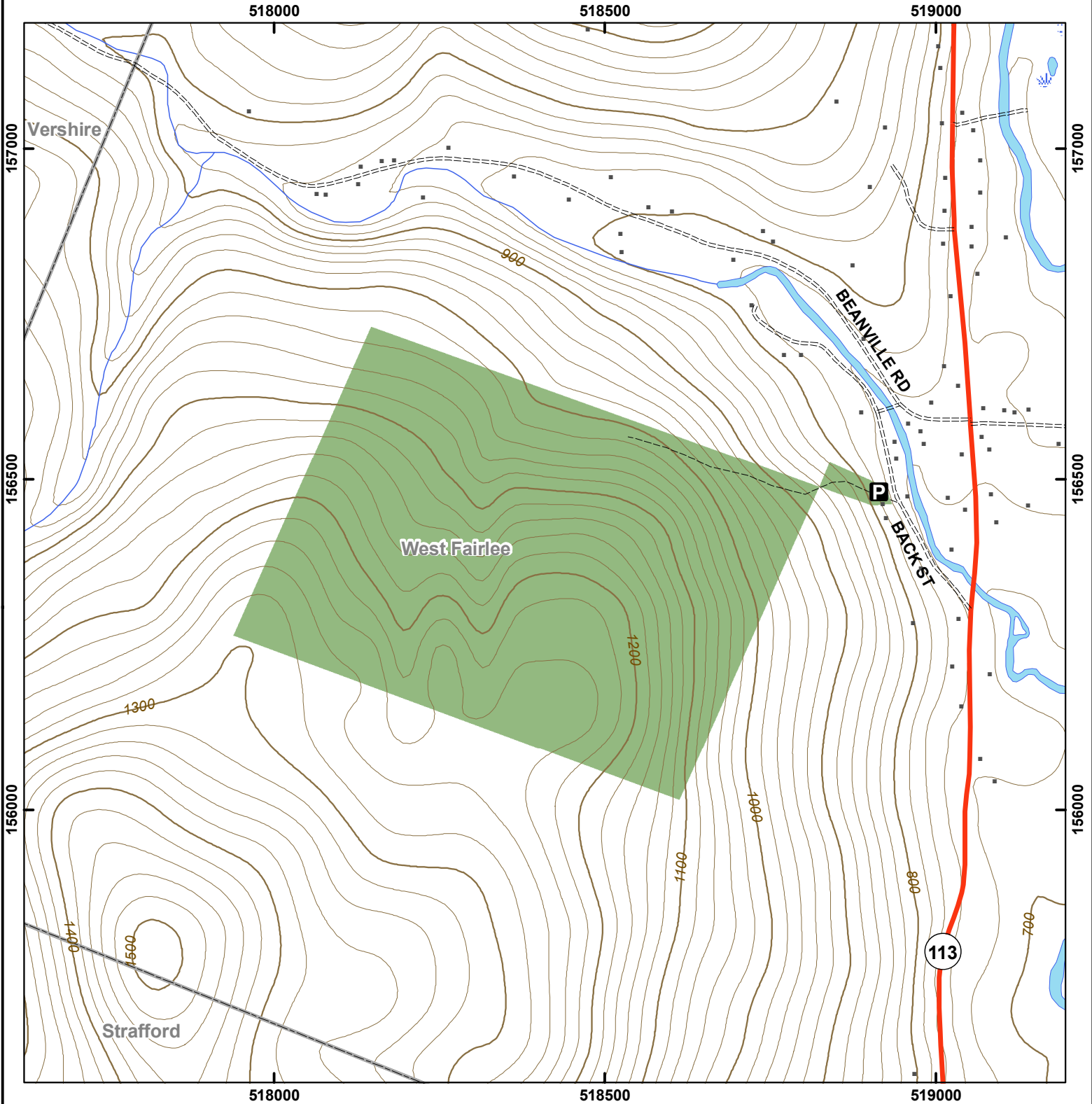


Small mammals such as deer mice are not as noticeable as big game, but are still an important component of Vermont's woodlands. They are part of the prey base for carnivores. ©Jupiter Images 2004.

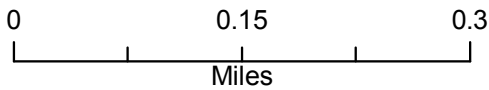


Vermont Fish & Wildlife Department

West Fairlee Wildlife Management Area



West Fairlee WMA: 101 acres



- Wildlife Management Area
- Other Public Land
- Private w/Public Access
- Wildlife Viewing Areas
- Car-top Access
- Parking
- Boat Ramp
- Gate
- Designated Camp Site During Big Game Seasons Only

This map is for illustrative purposes only. The accuracy of the data layers shown on this map are limited by the accuracy of the source materials. No warranty as to the accuracy or the usefulness of the data is expressed or implied.