

Worcester Woods Wildlife Management Area

General Description

Worcester Woods Wildlife Management Area (WMA) is located in the central Vermont town of Worcester. It is 184 acres in size, is owned by the State of Vermont and managed by the Vermont Fish & Wildlife Department. Access to the WMA can be difficult as the WMA is essentially land-locked; however, a narrow, steep right-of-way for foot travel only provides access easterly from Route 12. The right-of-way begins at an informal pull-off on the east side of Route 12, north of the first bridge over the North Branch of the Winooski River upstream of Hancock Brook.

History

The WMA was purchased by the State of Vermont in 1971, using Fish & Wildlife Department funds generated from the sale of Vermont hunting and fishing licenses.

Habitat Features

The WMA lies within the watershed of the North Branch of the Winooski River, sandwiched between the North Branch of the River and Worcester Pond. The aspect is generally southwesterly, with elevations ranging from

1,300 feet in the northeast corner to 900 feet in the southwest corner. The WMA is completely forested with a mix of red and sugar maple, yellow birch, beech, hemlock, balsam fir and red spruce.

There are several small, intermittent streams that flow north to south and exit the WMA in the southwest corner, eventually emptying into the North Branch.

Common Fish and Wildlife

Mammals Game animals include white-tailed deer, moose, black bear, coyote, bobcat and snowshoe hare. Expect to find many smaller non-game species as well.

Birds Ruffed grouse can be found on the WMA, as well as a variety of other deciduous and coniferous forest associated songbirds.

Reptiles and Amphibians Red-backed salamanders, American toads and garter snakes might be found on the WMA.

Fish There are no fishable waters on the WMA.

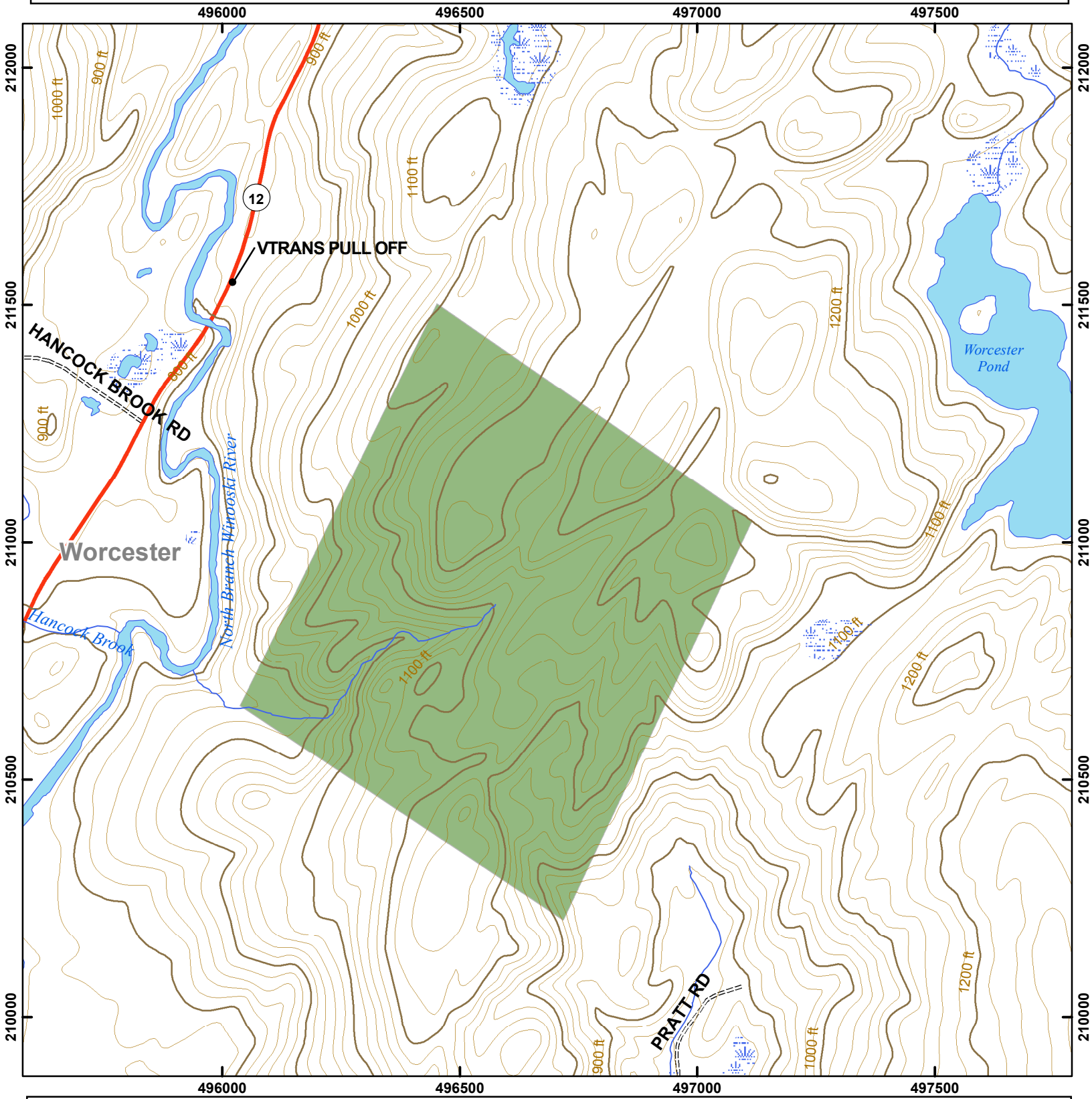


Bobcats are elusive inhabitants of Vermont's woodlands.
©Jupiter Images 2004.

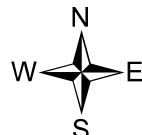
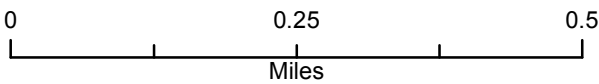


Vermont Fish & Wildlife Department

Worcester Woods Wildlife Management Area



Worcester Woods WMA: 184 acres



- Wildlife Management Area
- Other Public Land
- Private w/Public Access
- Boat Ramp
- Gate
- Wildlife Viewing Areas
- Car-top Access
- Parking
- Designated Camp Site During Big Game Seasons Only

This map is for illustrative purposes only. The accuracy of the data layers shown on this map are limited by the accuracy of the source materials. No warranty as to the accuracy or the usefulness of the data is expressed or implied.