

Intervale Wildlife Management Area

General Description

Located on 188 acres in Burlington, the Intervale Wildlife Management Area (WMA) was created to mitigate the loss of wetlands due to construction of Route 127. The land belongs to the Vermont Agency of Transportation, which bought it in 1987. There are two parcels. The Cattail Marsh Unit consists of 122 acres of wetland. The Howe Farm Unit is 66 acres of riparian upland and wetland. The Vermont Fish & Wildlife Department is charged with wildlife habitat conservation and development, and has wildlife management rights and responsibilities. The WMA is open to fishing and trapping. The City of Burlington has a firearm discharge ordinance that effectively prohibits hunting with firearms.

Access to the Howe Farm piece is at the end of Ethan Allen Parkway in the new North End. Cross the bridge spanning Route 127 and go through the gate on the east side. There is no parking at the gate; visitors must park on the Ethan Allen Parkway. There is no parking near the Cattail Marsh Unit, nor any easy access.

History

The property is part of a large floodplain of the Winooski River, which has historically been both marsh and farmland. Some farming is still practiced on upland portions near Intervale Road. The last dairy farm in the Burlington city limits was in the Intervale.

The Ethan Allen Homestead and Museum is near the Howe parcel. It features Ethan Allen's last home and farm, and is dedicated to education about the history of the area.

Both the Howe Farm unit and the Cattail Marsh Unit of the WMA were part of mitigation to replace wetlands that were filled to construct the Northern Connector (Route 127). Habitat productivity and diversity was enhanced by the construction of a water control structure in 1985.

Habitat Features

The Intervale WMA is part of a larger wetland complex in the floodplain of the Winooski River. The soils are fertile clays. There is a natural oxbow, stretches of open water, ditches and leads, deep bulrush marsh, and an extensive cattail marsh. There are small areas of open fields and brushy old fields.

Strumose sunflower, creeping love-grass, cursed crowfoot and small bidens are rare plants that have been found in the Intervale.

Common Fish and Wildlife

Mammals Beaver, mink, muskrat, gray squirrel, raccoon and red fox can be found in the Intervale.

Birds This WMA provides a good birding opportunity close to an urban environment. Black and wood ducks, mallards and blue-winged teal are among the ducks that may be seen. Canada geese, American and least bitterns, herons and soras also occur.

Reptiles and Amphibians Salamanders that might be found in the Intervale are newts and northern two-lined salamanders. Frog species include pickerel and northern leopard frogs. Snapping and northern map turtles are possible, as well as brown, northern water and eastern ribbon snakes.

Fish The Howe Farm unit borders the Winooski River. Warmwater fish that may be found in the Winooski River include large and smallmouth bass, perch, walleye and northern pike. Some of the old oxbows on the property may hold bass, perch and panfish.

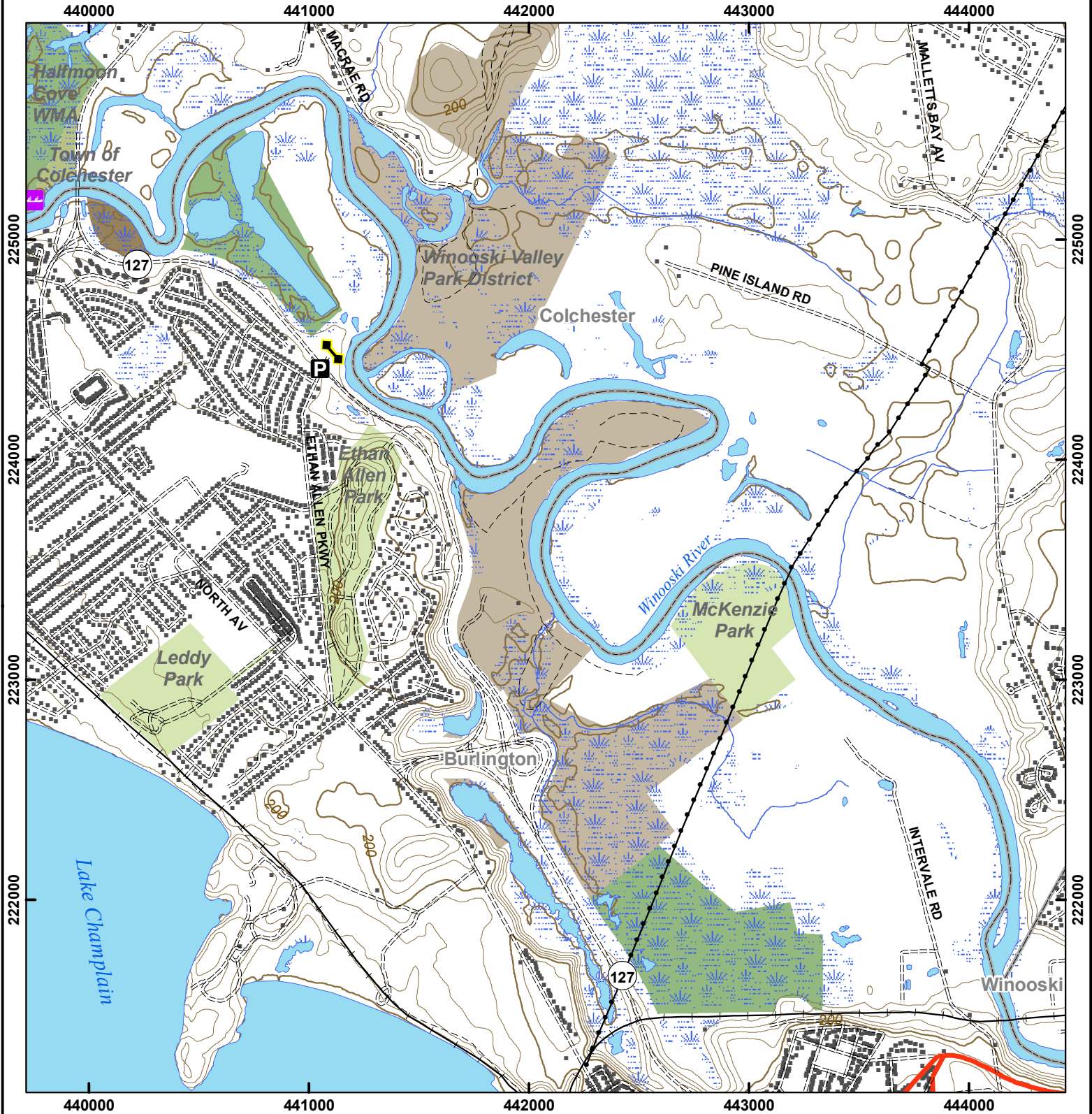


An aerial view of the Burlington Intervale showing the varied nature of a wetland complex. Bill Crenshaw, VFWD photo.

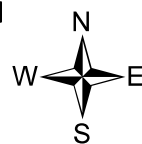
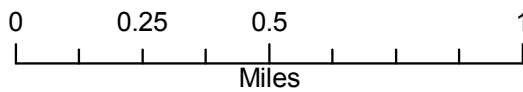
Intervale WMA is open to regulated trapping, fishing, hiking and wildlife viewing.



Vermont Fish & Wildlife Department Intervale Wildlife Management Area



Intervale WMA: 188 acres



- Wildlife Management Area
- Other Public Land
- Private w/ Public Access
- Wildlife Viewing Areas
- Car-top Access
- Parking
- Boat Ramp
- Gate
- Designated Camp Site During Big Game Seasons Only

This map is for illustrative purposes only. The accuracy of the data layers shown on this map are limited by the accuracy of the source materials. No warranty as to the accuracy or the usefulness of the data is expressed or implied.