

# Lemon Fair Wildlife Management Area

## General Description

Lemon Fair Wildlife Management Area (WMA) is located in Bridport, in central western Vermont. Presently it consists of 341 acres in 9 parcels. It is owned by the State of Vermont and managed by the Vermont Fish & Wildlife Department. The only access at this time is by canoe or by permission from adjacent landowners.

In the near future, there will be a parking area in the northeastern parcel of the WMA. Look for the WMA sign.

## History

Native Americans frequented the low-lying and placid Lemon Fair River. The origin of the name is obscure, but one explanation is that it is an anglicized version of the French "Limon faire," which means "To make mud." Another version is that it was called "Le mon faire" or "Let the people be."

A good portion of the Lemon Fair floodplains were probably originally covered with Champlain Valley clayplain forest; but during European-American settlement the land was cleared for agriculture. Some of the fields along the stream were once "marsh hayfields" and were harvested communally.

Lemon Fair WMA is one of the newest projects of the Vermont Fish & Wildlife Department. The Department made its first purchase in 2000 from Leo and Cheryl Conner. The Conner's farm is called Morgan Hill Farm, because it was a famous Morgan horse-breeding farm in the mid-19<sup>th</sup> century. Black Hawk, whose blood runs in many present-day Morgans, was bred here. Black Hawk's skeleton is on display at the UVM Morgan Horse Farm in Weybridge. The Conner farm is presently a dairy operation.

All of the funding to date for this WMA came from the State Waterfowl Funds, generated by the sale of the Vermont Duck Stamp.

## Habitat Features

The Lemon Fair arises in Orwell and flows north to empty into the Otter Creek in Weybridge. It is a mostly low-lying river with floodplains along many reaches. Part of the WMA is forested with mature silver and red maple, and some is grassland, pasture and old fields. Most of the WMA is in the floodplain.

A State-threatened mussel, the giant floater, occurs in the Lemon Fair River.



Green herons are not common, but may be seen in Vermont's marshes.

©Jupiter Images 2004.

## Common Fish and Wildlife

**Mammals** All the Vermont wetland mammal species can be found here, including beaver, muskrat, otter and mink. There are probably also smaller wetland-dwelling mammals such as long-tailed weasels and star-nosed moles. Game species on the uplands are white-tailed deer and cottontail rabbit. Upland furbearers would include red fox and coyote.



Great blue herons are Vermont's most common herons. USFWS photo.

**Birds** Turkey and woodcock can be found on the upland portions of the WMA. Waterfowl are present, especially when the floodplain is seasonally inundated. Breeding ducks in the area include mallards, black and wood ducks, blue-winged teal and hooded mergansers. Many other species pass through during migration. Great blue and green herons, other wading birds and shorebirds also use the WMA, particularly when it is flooded.

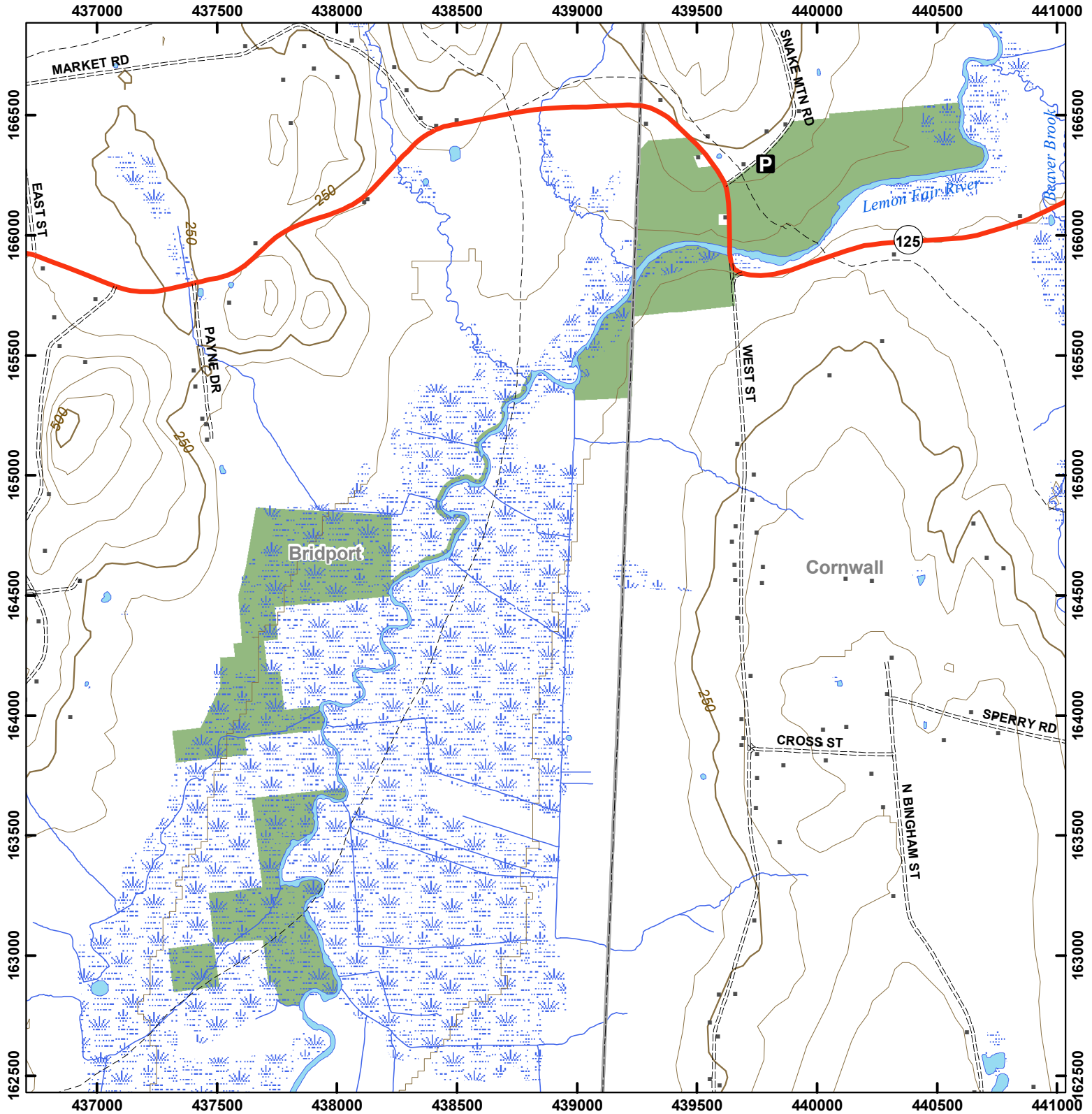
**Reptiles and Amphibians** The rare four-toed salamander may be found on the WMA, along with more common salamanders such as spotted, northern dusky, red-backed and northern two-lined salamanders. Northern leopard, wood and bull frogs may be found in the Lemon Fair River, along with snapping and painted turtles. Snakes to look for are northern water, milk, smooth green, brown and the more rare red-bellied snake.

**Fish** Brown bullhead, northern pike and bass may be found in the Lemon Fair River.

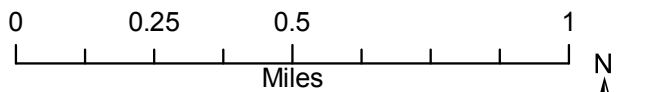


# Vermont Fish & Wildlife Department

## Lemon Fair Wildlife Management Area



**Lemon Fair WMA: 341 acres**



This map is for illustrative purposes only. The accuracy of the data layers shown on this map are limited by the accuracy of the source materials. No warranty as to the accuracy or the usefulness of the data is expressed or implied.



- Wildlife Management Area
- Other Public Land
- Private w/ Public Access
- Wildlife Viewing Areas
- Car-top Access
- P Parking
- Boat Ramp
- Gate
- Designated Camp Site During Big Game Seasons Only