

Pomainville Wildlife Management Area

General Description

The Pomainville Wildlife Management Area (WMA) is a 360-acre parcel along the banks of Otter Creek in Pittsford. The parcel is owned by the Vermont Fish & Wildlife Department and managed cooperatively with US Department of Agriculture (USDA) Natural Resources Conservation Services (NRCS). The WMA can be accessed by a parking lot located just north of the village of Pittsford, along Route 7. From the parking lot, access to the WMA is limited to foot travel via old farm roads. The western border consists of over 8,000 feet of Otter Creek shoreline.

History

Prior to European settlement, Vermont's landscape was comprised primarily of extensive forests interspersed with virgin wetlands. As Europeans colonized the Champlain Valley of what is now Vermont, they found very fertile soils and relatively flat lands, ideal for agriculture. The forests were cleared, wetlands were drained and farming became a way of life.

The Pomainville Farm located in the southern end of the Champlain Valley along the floodplain of Otter Creek has a rich but challenging history of farming. Historically, every spring and occasionally during the fall, Otter Creek overflows its banks, submerging much of the productive agriculture fields under several feet of water. As the water retreats in early summer, hay fields are left muddy and inaccessible for heavy farm equipment. The standing hay is covered with a thick layer of silt, which impacts hay quality. Despite these challenges, the Pomainville family battled the floodwaters and successfully farmed this parcel for three generations.

In 2003, the USDA/NRCS and Mr. Pomainville signed a Wetland Reserve Agreement, which placed 356 acres of his farm under a perpetual easement. Under this agreement, a jointly prepared management plan will create a forested buffer along Otter Creek, expand existing woodlands, maintain grasslands for nesting birds, and restore 46 acres of formerly drained wetlands through a series of ditch plugs. This agreement represents the largest wetland reserve project ever completed in Vermont.

Ducks Unlimited Inc. (DU) acquired this land plus an additional four acres along Route 7 for parking in 2004. Vermont Fish & Wildlife acquired the total 360 acres from DU in 2005. Funding for this acquisition came from the Vermont Duck Stamp Fund and Ducks Unlimited.

Habitat Features

The most prominent habitat feature is Otter Creek, which winds its way along the western border of the WMA. Numerous wetlands, ranging from alder swamps to standing emergent vegetation to open water, can be found near the Creek and in low-lying areas. The northern portion of the WMA has extensive grasslands, optimal for a variety of grassland nesting birds. Forested habitat prevails at the southern end of the WMA. Here, a small white pine and white cedar stand provides critical habitat for wintering deer. A small but vibrant wild apple orchard grows along the southern property line. There are brushy old fields scattered throughout the parcel, creating a diverse transition zone between the forests and the open grasslands.

Years of active farming on this land resulted in the loss of many of the pre-settlement habitat features, such as riparian forests and wetlands, which had been cut and drained.

Restoring the wetland habitat of this WMA will involve filling in drainage ditches, installing water control structures, and planting native vegetation along the banks of Otter Creek. The fields will be mowed to prevent them from reverting to weeds and woody vegetation. Mowing will be delayed until after the nesting season of the grassland birds using this habitat.



Pomainville WMA offers wildlife a diversity of habitats, including marsh and hardwood swamp wetlands, grasslands, and upland forest. Photo:USDA-NRCS

Common Fish and Wildlife

Mammals Open meadows, old fields, apple orchards and mature forest provide excellent deer habitat. Raccoons, muskrats, beavers and mink are likely to be found foraging along Otter Creek and its associated wetlands. Little brown and big brown bats will find good foraging over the wetlands, and the federally endangered Indiana bat may be present as well.

Birds The array of wetlands, grasslands, scrub-shrub and forest habitats provide ideal habitat for a diversity of bird species. The wetlands provide nesting and stopover habitat for many waterfowl species. In early summer, you can expect to find nesting Canada geese, mallards, black ducks and wood ducks. During the spring and fall migrations large numbers of geese and ducks can be spotted using the wetlands. Look to the marches for wading birds, such as the American bittern and great blue heron. Extensive grasslands provide crucial nesting habitat for bobolinks, eastern meadowlarks and savannah sparrows. The diverse habitat on the WMA provides good nesting and foraging habitat for wild turkeys.

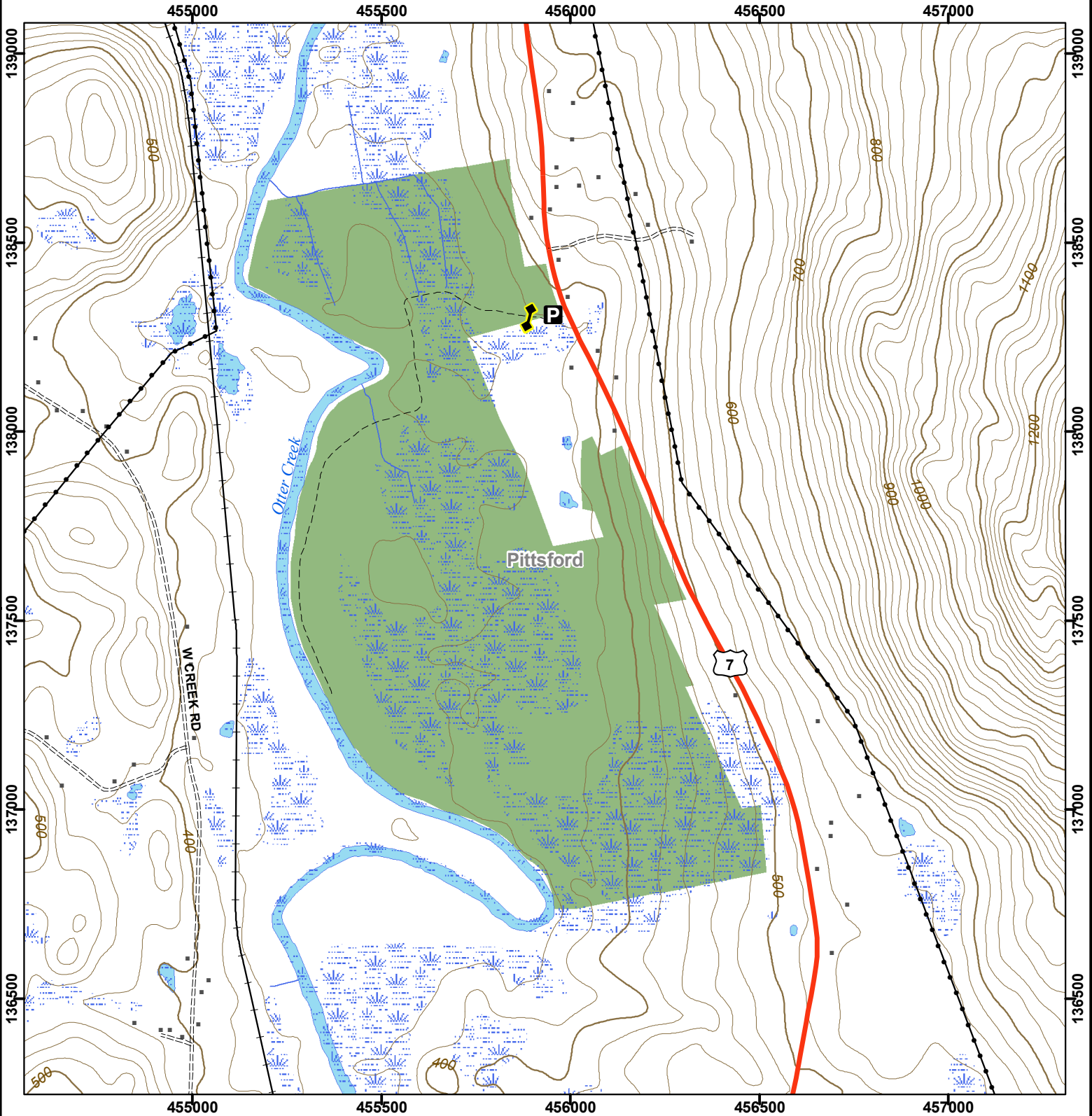
Reptiles and Amphibians The extensive complex of wetlands, combined with the upland habitats provides both the aquatic and terrestrial habitats that many amphibians and reptiles require. You are likely to find eastern newts, American toads, gray tree frogs, spring peepers, green frogs and northern leopard frogs on this WMA. Wetland restoration and upland vegetation management efforts will improve the habitat for blue-spotted salamanders, wood frogs, spotted salamanders and eastern red-backed salamanders. Several different reptile species are likely to be found on the WMA, including painted turtles, snapping turtles, garter snakes, milk snakes, northern water snakes and ribbon snakes.

Fish The Pomainville WMA offers fishing for warm water species such as smallmouth bass, yellow perch, northern pike and brown bullhead and seasonal fishing opportunities for brown trout.

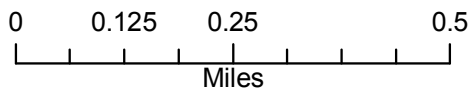


Vermont Fish & Wildlife Department

Pomainville Wildlife Management Area



Pomainville WMA: 359 acres



- Wildlife Management Area
- Other Public Land
- Private with Public Access
- Wildlife Viewing Areas
- Car-top Access
- P Parking
- Boat Ramp
- Gate
- Designated Camp Site During Big Game Seasons Only

This map is for illustrative purposes only. The accuracy of the data layers shown on this map are limited by the accuracy of the source materials. No warranty as to the accuracy or the usefulness of the data is expressed or implied.