

South Stream Wildlife Management Area

General Description

South Stream Wildlife Management Area (WMA) is a 130-acre parcel in Pownal, which is owned by the State of Vermont and managed by the Vermont Fish & Wildlife Department. Access and parking is located at the end of South Stream Access Area Road off South Stream Road. A second access point is from the end of Funny Farm Road east of Maple Grove Road.

History

The Vermont Fish & Wildlife Department acquired South Stream WMA in 1957 using Pittman-Robertson funds, which are generated from the sale of firearms, ammunition and archery equipment. South Stream was purchased from seven different families: Quinby, Lillie, Crosier, Amadon, Adier, Howard and Morgan.

Habitat Features

South Stream Pond is a 24-acre impoundment with emergent vegetation, such as cattails, and open water. A dam is located in the northwestern corner of the WMA where South Stream Pond drains into South Stream. There are alders on the property, but the majority of the landscape is emergent wetland that rims the length of South Stream. This is a great area for waterfowl watching.

A rare plant, Hill's pondweed, is located on this WMA. Please remember that this and other plants should not be picked or dug up regardless of abundance.

Common Fish and Wildlife

Mammals Wetland mammals occurring in the WMA include beaver, mink, muskrat and otter. Some upland mammals also visit the property, such as fisher, red fox, coyote, raccoon and white-tailed deer.

Birds South Stream WMA provides excellent waterfowl habitat. Nesting ducks include black, wood and mallard ducks. Other waterfowl species may be seen during migration. Look for great blue herons wading in the shallows. Kingbirds, tree swallows, red-winged blackbirds, and other water-loving songbirds breed and forage around the wetlands. Woodcock are also found on the WMA.

Reptiles and Amphibians South Stream Pond and its associated wetlands contain several species of amphibians including pickerel, wood and gray tree frogs, American toad, spotted salamanders, eastern newt and eastern red-backed salamanders. The calls of American bullfrogs, green frogs and spring peepers can be heard in spring and summer. Snapping and painted turtles are likely to be seen sunning themselves on logs and rocks in the pond or along the shore of the stream. Garter and brown snakes can also be found on this WMA; they are more likely to be on the upland habitat.

Fish South Stream contains a number of fish species including brown, brook and rainbow trout, with brown trout being the most common. Largemouth bass, brown bullhead, white and longnose sucker, creek chub, blacknose and longnose dace, rock bass, slimy scalpin, golden and common shiners, and pumpkinseeds can all be found in South Stream. South Stream Pond will share some of the same species as the stream but is unlikely to contain trout.



Wood frogs have a distinctive dark mask. ©Jupiter images 2004.



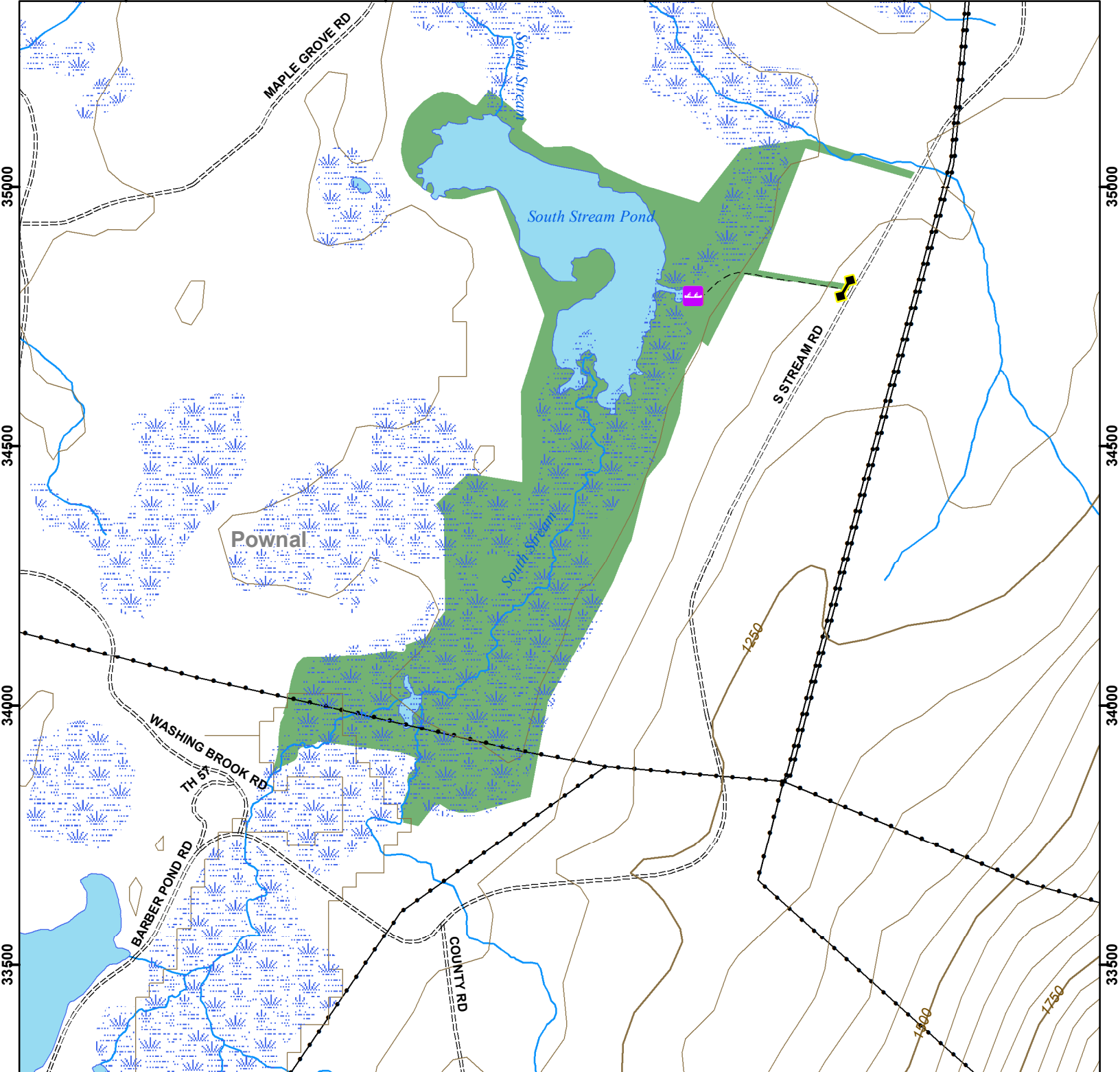
Vermont Fish & Wildlife Department South Stream Wildlife Management Area

443500

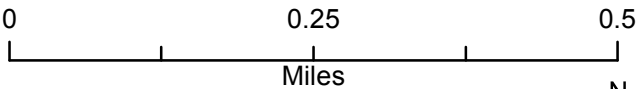
444000

444500

445000



South Stream WMA: 130 acres



- Wildlife Management Area
- Other Public Land
- Private with Public Access
- Wildlife Viewing Areas
- Car-top Access
- Parking
- Boat Ramp
- Gate
- Designated Camp Site During Big Game Seasons Only

This map is for illustrative purposes only. The accuracy of the data layers shown on this map are limited by the accuracy of the source materials. No warranty as to the accuracy or the usefulness of the data is expressed or implied.