

Star Lake Wildlife Management Area

General Description

Star Lake Wildlife Management Area (WMA) is a 92-acre parcel of land owned by the State of Vermont and managed by the Vermont Fish & Wildlife Department. The parcel is located in the town of Mt. Holly, next to the village of Belmont. The WMA can be accessed from Teer Road, which runs west of Belmont Road.

History

The WMA was named after Star Lake, located on the WMA's southwestern border. Star Lake was originally called Jackson Pond but was renamed in the late 1940's. The lake was formerly a marsh or bog. It was dammed in the 1800's to provide power for the many mills and factories in the town of Mechanicsville, now Belmont.

Judson and Margaret Lyon donated the land in 1979 to the Vermont Fish & Wildlife Department.

Habitat Features

Star Lake WMA is forested with a mix of red maple, yellow birch, red spruce and balsam fir. There are a few scattered beech and sugar maples. The WMA contains a small portion of a hardwood ridge located near Teer Road. There are a few small open areas around the 792 feet of lake frontage. Marshes associated with Star Lake are in the southern portion of the WMA. The lake is 63 acres, and about 8 feet in depth. It is used for boating, swimming, fishing, and a private water supply for nearby residents. The lake has had a history of Eurasian water milfoil problems, so please be careful not to transport any invasive plants such as milfoil into the pond.

Common Fish and Wildlife

Mammals The forest contains a number of mammals including white-tailed deer, black bear, red fox and coyote. Snowshoe hare prefer early-successional areas with dense undergrowth where they can easily feed and

hide. Moose feed on aquatic vegetation along Star Lake and its marshes in spring and summer, and browse among the spruce and fir during colder winter months. Beaver occasionally utilize the lake and have built a lodge on a small "island" in the middle, but tend to be more active in the wetlands behind the pond. Mink have also been spotted in the wetlands. Smaller mammals such as moles, shrews, squirrels and chipmunks are located throughout the WMA.

Birds Ruffed grouse, woodcock and turkey are found on this WMA, but in limited numbers. A variety of birds use the lake and marshland during migratory stop-overs including mergansers, snow geese, Canada geese, coots, herons, sandpipers, black, wood and mallard ducks. Songbirds that like to dwell near water such as tree swallows, red-winged blackbirds and Baltimore orioles may be seen or heard.

Reptiles and Amphibians Green frogs are commonly seen and heard in the shallow Star Lake. Spring peepers are harder to spot but make a loud chorus. Wood frogs are more likely to be seen in the moist woodlands of the WMA. Eastern red-backed salamanders are very common; they prefer cool moist forests. Northern dusky and northern two-lined salamanders can be found hiding under moist logs or rocks. Eastern newts live in Star Lake during their larval and adult stages, and in the woods during their eft stage.

Fish Star Lake is a shallow warmwater lake that contains several species of fish. The lake has been stocked as a put-and-take rainbow trout fishery since 1967. Yellow perch and largemouth bass have also been stocked in the lake. Largemouth bass were first stocked in 2001 after a winter kill, but there are no plans for future stocking. Other species found in the lake include golden shiners, bullhead catfish, pumpkinseed, rock bass and pickerel.



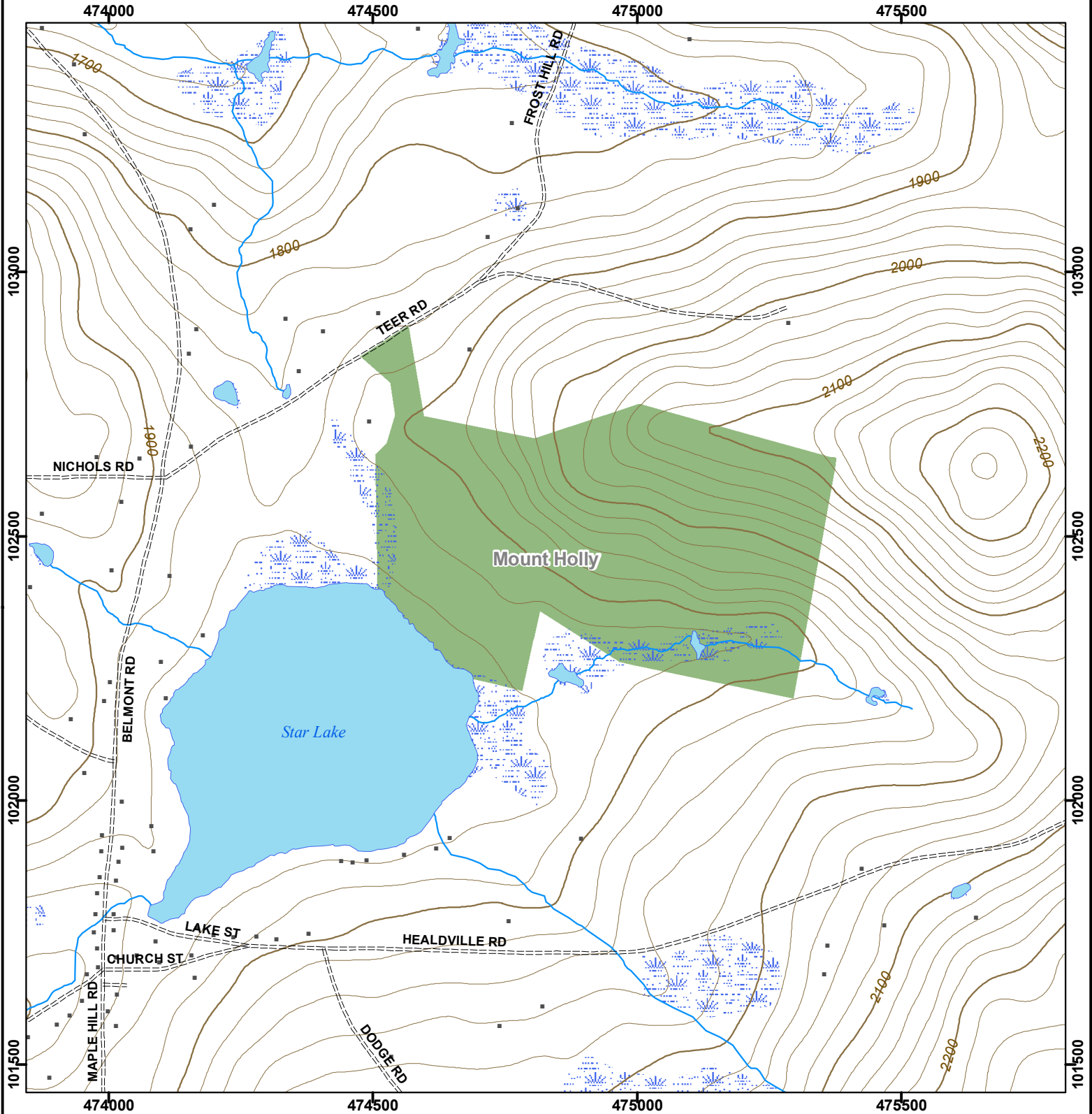
Mink forage in streams and wetlands. ©Jupiter Images 2004.

Star Lake WMA is open to regulated hunting, trapping, fishing, hiking and wildlife viewing.

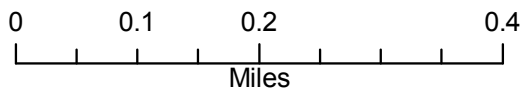


Vermont Fish & Wildlife Department

Star Lake Wildlife Management Area



Star Lake WMA: 92 acres



- Wildlife Management Area
- Other Public Land
- Private with Public Access
- Wildlife Viewing Areas
- Car-top Access
- Parking
- Boat Ramp
- Gate
- Designated Camp Site During Big Game Seasons Only

This map is for illustrative purposes only. The accuracy of the data layers shown on this map are limited by the accuracy of the source materials. No warranty as to the accuracy or the usefulness of the data is expressed or implied.