

Ottauquechee Wildlife Management Area

General Description

The Ottauquechee Wildlife Management Area (WMA) is a small, 284-acre parcel, located on the south side of the Ottauquechee River in the town of Bridgewater. It is within the Southern Green Mountains biophysical region of Vermont. The only legal access to the WMA is by wading across the river from Route 4, west of Bridgewater Corners.

The WMA land is owned by the State of Vermont and managed by the Vermont Fish & Wildlife Department.

History

The bulk of the Ottauquechee WMA was sold to the Vermont Fish & Wildlife Department in 1959. The timber rights were reserved by the Atkinson-Davis Corporation. In 1982, William and Sallie Bones deeded an additional 28 acres to the Vermont Fish & Wildlife Department. Because of its relatively small size, its inaccessibility and lack of timber rights, opportunities to manage for wildlife are few.

Habitat Features

Ottauquechee WMA is on a steep, north-facing slope of Bald Mountain. The Ottauquechee River flows along its northern boundary. Elevations range from 1,000 feet near the river to 2,000 feet. It is forested with second growth sugar and red maple, yellow birch and beech. It functions as an important buffer for the river.

Common Fish and Wildlife

Mammals Animals typical of northern hardwood forests occur on the WMA. These include white-tailed deer, bear, red fox and coyote. Other smaller mammals also occur such as raccoon and skunk. Mink may frequent the edge of the river.

Birds Ruffed grouse and turkey are two game bird species that occur on the WMA and may be hunted in season. A variety of songbirds that inhabit hardwood forests also occur, including black-capped chickadee, black-throated blue warbler, red-eyed vireo, ovenbird, and downy and hairy woodpeckers. Woodland raptors such as barred owl and Cooper's hawk may also be present.

Reptiles and Amphibians One may find gartersnakes, American toads, red-backed and two-lined salamanders in the woodlands of the WMA. Wood frogs and spring peepers raise their choruses from permanent and ephemeral waters in the spring. The Ottauquechee River contains green frogs and painted turtles.

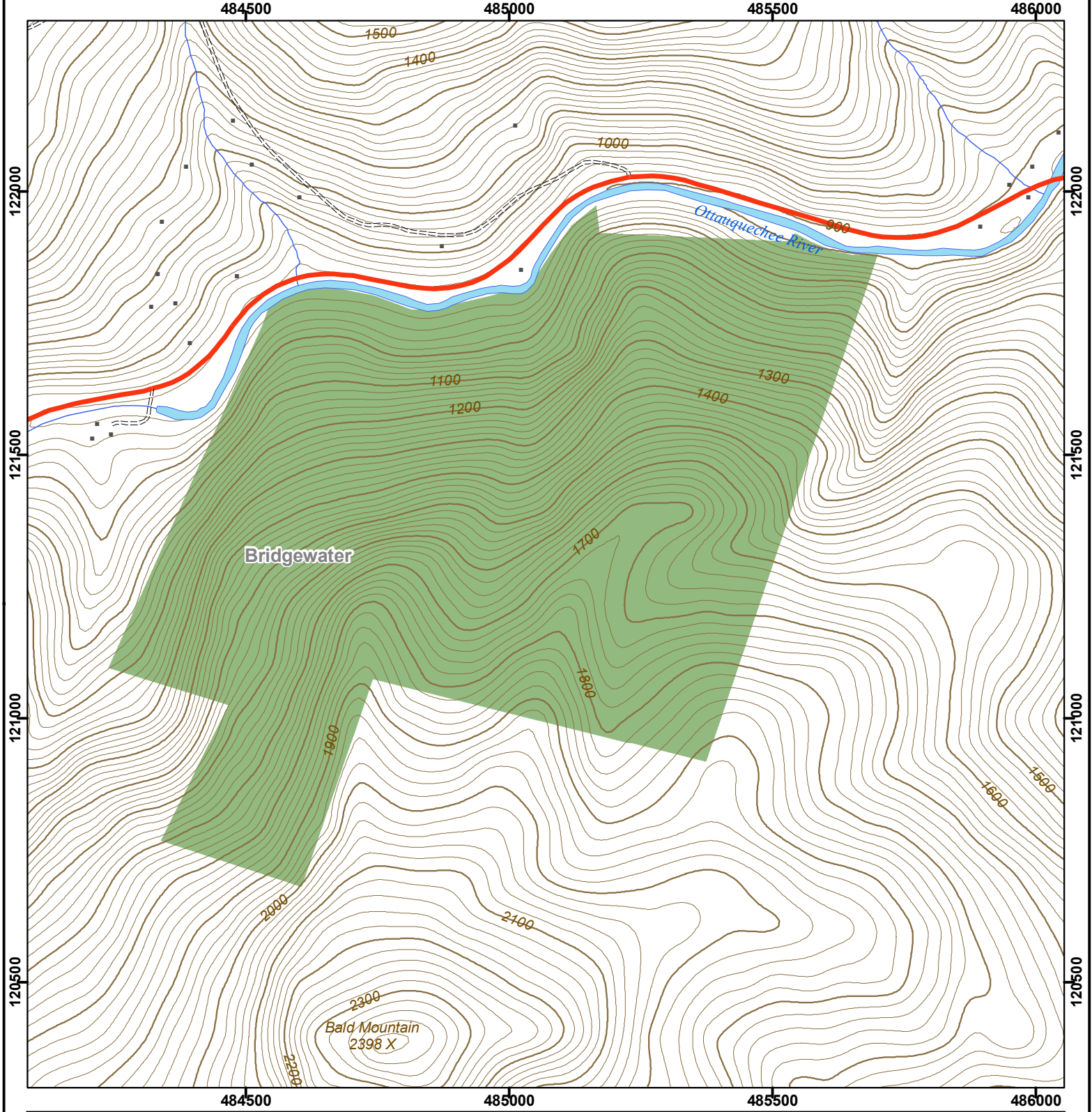
Fish Wild brook, brown and rainbow trout occur in the Ottauquechee River at the edge of the WMA.



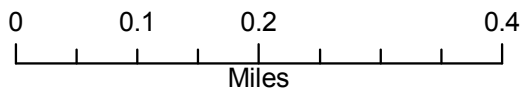
Native brook trout may be found in the Ottauquechee River. ©Jupiter Images 2004.



Vermont Fish & Wildlife Department Ottauquechee Wildlife Management Area



Ottuquechee WMA: 284 acres



- Wildlife Management Area
- Other Public Land
- Private with Public Access
- Wildlife Viewing Areas
- Car-top Access
- Parking
- Boat Ramp
- Gate
- Designated Camp Site During Big Game Seasons Only

This map is for illustrative purposes only. The accuracy of the data layers shown on this map are limited by the accuracy of the source materials. No warranty as to the accuracy or the usefulness of the data is expressed or implied.